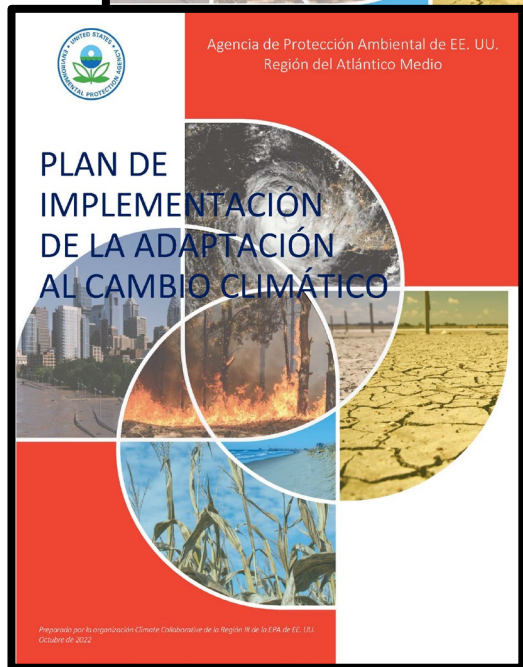
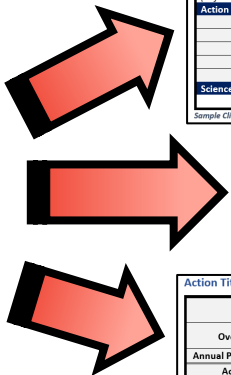
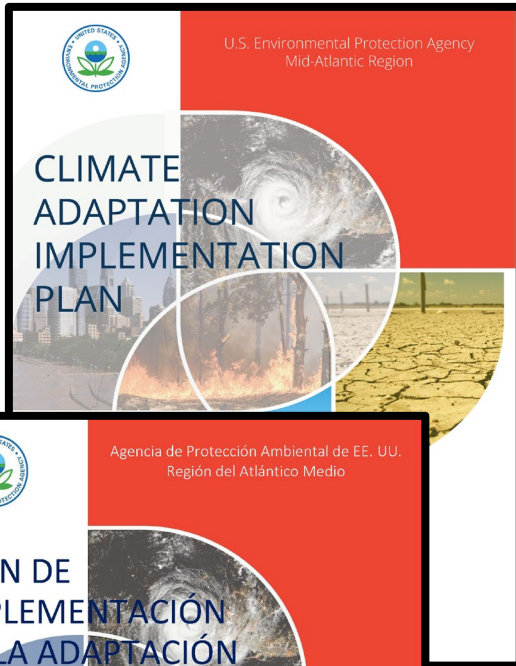




# Blue Skies Ahead: Climate Change Update

Matt Konfirst  
Climate Coordinator  
EPA Region 3

# Updates from the Region 3 Climate Program



Sample Climate Adaptation Action Template

**Action Title:**

**Climate Threat:** [Icons for various climate threats]

**Overarching Goal(s):** [Icons for various goals]

**Annual Performance Goal:** APG 1 APG 2 APG 3 APG 4 APG 5 APG 6

**Activity Timeframe:** FY22 FY23 FY24 FY25 FY26

**Climate Vulnerability:** (Reference to pertinent topics covered in Chapter 2)

**Action:**

**Description:**

**Metric(s):**

**Project Challenges:**

**Co-benefits:**

**Science Needs:**

**Action Title:**

**Climate Threat:** [Icons for various climate threats]

**Overarching Goal(s):** [Icons for various goals]

**Annual Performance Goal:** APG 1 APG 2 APG 3 APG 4 APG 5 APG 6

**Activity Timeframe:** FY22 FY23 FY24 FY25 FY26

**Climate Vulnerability:** (Reference to pertinent topics covered in Chapter 2)

**Action:**

**Description:**

**Metric(s):**

**Project Challenges:**

**Co-benefits:**

**Owner Email:** [Field]

**New Work?** [Field]

**Resources Available?** [Field]

**Action Title:**

**Overarching Goal(s):** [Icons for various goals]

**Annual Performance Goal:** APG 1 APG 2 APG 3 APG 4 APG 5 APG 6

**Activity Timeframe:** FY22 FY23 FY24 FY25 FY26

**Climate Vulnerability:** (Reference to pertinent topics covered in Chapter 2)

**Action:**

**Description:**

**Metric(s):**

**Project Challenges:**

**Co-benefits:**

**Owner Email:** [Field]

**New Work?** [Field]

**Resources Available?** [Field]

Action Title	Measure	2022	2023	2024	2025	2026
<b>COMPLETED</b>						
<b>Finalize Region III Climate Adaptation Implementation Plan.</b>		100%				
Percent completion of final plan.						
<b>Deploy the EPA Region III Climate National Priorities List (NPL) Flooding and Vulnerability Tool.</b>		102%				
Deployment of training- track number of employees trained FY22.						
Development of a SOP for use FY22.		100%	100%			
Refine the users guide for roll out to project managers for full implementation of the tool. (FY24)				20%		
Measure implementation of tool for standard use by tracking number of times utilized (FY24/25).				0%	0%	
<b>Support climate resilient infrastructure.</b>		100%	0%	0%		
Number of water and wastewater systems receiving technical assistance and training, including capacity development, system optimization, climate resilience and operator certification.						
Number of times we share climate tools to states, local governments and water and wastewater systems to help mainstream adaptation and mitigation and encourage investments in resilient infrastructure.		122%	220%	40%		
Number of collaboration opportunities with states.			100%	40%		
Number of loans/dollar amounts in projects for disadvantaged communities related to climate adaptation.			200%	0%		
<b>Build and maintain coastal climate resiliency through Blue Carbon resources.</b>		100%				
Develop the project scope, identify research needs, and submit proposals for funding (FY22).						
Select a partner community, develop an engagement plan and identify partner and community science needs (FY23).		100%	70%	53%		
			0%	50%		
				0%		

**Region 3 Climate Plan Dashboard**  
Did we miss something? To request that a climate plan be added to this site, please contact konfrist.matthew@epa.gov.

**Map Filters**

- Filter by State:** No category selected
- Filter by Focus:** No category selected
- Climate Plan by Year:** No category selected

**Localities Covered by a Climate Plan**

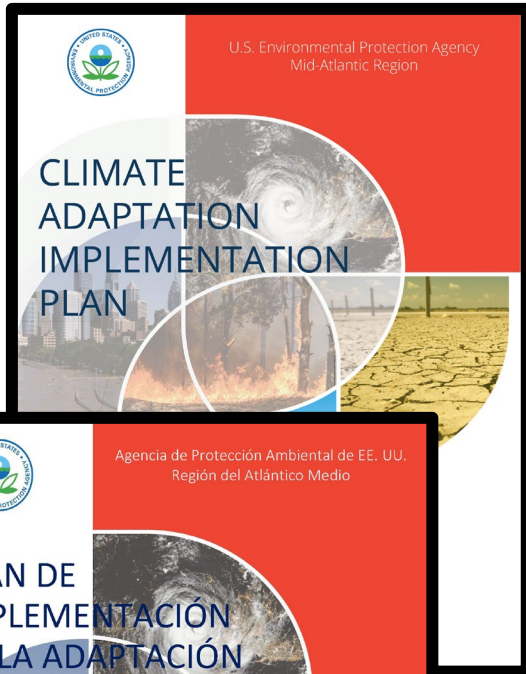
# 122

(Filtered)

Title	Climate Plan
2.0 The Foundation for t...	<a href="#">Link to Climate Plan</a>
Act 167 Scope of Study ...	<a href="#">Link to Climate Plan</a>
Action Plan for the Grea...	<a href="#">Link to Climate Plan</a>
ADAMS COUNTY Coun...	<a href="#">Link to Climate Plan</a>
Arlington Initiative Rethi...	<a href="#">Link to Climate Plan</a>

VGIN, Esri, TomTom, Garmin, FAO, NOAA, USGS, EPA, USFWS | Map Service: US EP... Powered by Esri

# Updates from the Region 3 Climate Program




Action Title	Measure	2022	2023	2024	2025	2026
<b>Finalize Region III Climate Adaptation Implementation Plan.</b>						
Percent completion of final plan.		100%				
COMPLETED						
<b>Deploy the EPA Region III Climate National Priorities List (NPL) Flooding and Vulnerability Tool.</b>						
Deployment of training- track number of employees trained FY22.		102%				
Development of a SOP for use FY22.		100%	100%			
Refine the users guide for roll out to project managers for full implementation of the tool, (FY24)				20%		
Measure implementation of tool for standard use by tracking number of times utilized (FY24/25).				0%	0%	
<b>Support climate resilient infrastructure.</b>						
Number of water and wastewater systems receiving technical assistance and training, including capacity development, system optimization, climate resilience and operator certification.		100%	0%	0%		
Number of times we share climate tools to states, local governments and water and wastewater systems to help mainstream adaptation and mitigation and encourage investments in resilient infrastructure.		122%	220%	40%		
Number of collaboration opportunities with states.			100%	40%		
Number of loans/dollar amounts in projects for disadvantaged communities related to climate adaptation.			200%	0%		
<b>Build and maintain coastal climate resiliency through Blue Carbon resources.</b>						
Develop the project scope, identify research needs, and submit proposals for funding (FY22).		100%				
Select a partner community, develop an engagement plan and identify partner and community science needs (FY23).		100%	70%	53%		
			100%	50%		
				0%		

## Region 3 Climate Plan Dashboard

Did we miss something? To request that a climate plan be added to this site, please contact [konfirst.matthew@epa.gov](mailto:konfirst.matthew@epa.gov).

**Map Filters**

**Filter by State**  
No category selected

**Filter by Focus**  
No category selected

**Climate Plan by Year**  
No category selected

**Localities Covered by a Climate Plan**

# 122

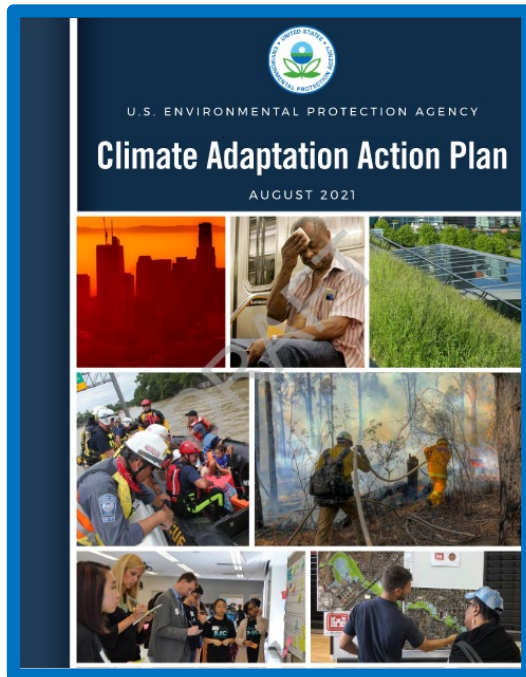
(Filtered)

Title	Climate Plan
2.0 The Foundation for t...	<a href="#">Link to Climate Plan</a>
Act 167 Scope of Study ...	<a href="#">Link to Climate Plan</a>
Action Plan for the Grea...	<a href="#">Link to Climate Plan</a>
ADAMS COUNTY Coun...	<a href="#">Link to Climate Plan</a>
Arlington Initiative Rethi...	<a href="#">Link to Climate Plan</a>

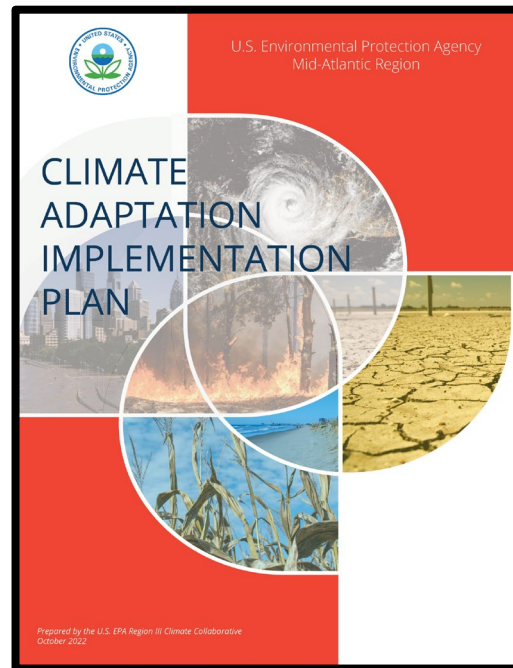
VCL: East, TomTom, Garmin, FAD, NOAA, USGS, EPA, USFWS | Map Service: US EP. Powered by Esri

# EPA Climate Planning and Implementation

## Agency Plan



## Region 3 Plan



## Priority Actions

Annual Performance Goal:	APG 1	APG 2	APG 3	APG 4	APG 5	APG 6
Activity Timeframe:	FY22	FY23	FY24	FY25	FY26	

## Next Steps



# CAIP Updates – Existing Priority Actions (FY22)

1. Finalize Region 3 Climate Adaptation Implementation Plan
2. Deploy the EPA Region III Climate National Priorities List (NPL) Flooding and Vulnerability Tool.
3. Support climate resilient infrastructure.
4. Build and maintain coastal climate resiliency through Blue Carbon resources.
5. Engage Region III Tribes in a meaningful dialogue on climate change adaptation and resilience.
6. Implement the Chesapeake Bay Program Climate Directive.
7. Assess air monitoring vulnerability.
8. Support Federal Facilities with resilience goals.
9. Advance understanding and implementation of climate-resilient Best Management Practices (BMPs).

# CAIP Updates – New Priority Actions (FY24)

1. Consider climate vulnerabilities at Superfund Sites.
2. Finalize the Region 3 Disaster Mitigation Implementation Strategy.
3. Update the Sea-level-rise Exploration and Assessment (SEA) decision support tool.
4. Convene a “Watershed Partnerships Workshop” to address climate adaptation at the watershed scale.
5. Engage Superfund communities on climate.
6. Partner with the Regional Science Council to host climate-focused webinars for both internal and external audiences.
7. Convene a quarterly meeting with Region 3 jurisdictions to coordinate across the Mid-Atlantic on climate issues.
8. Resilience capacity building in Environmental Justice/Social Justice Communities for climate change planning.
9. Developing Next-Generation Intensity-Duration-Frequency (NGIDF) Curve Data for EPA Region 3.
10. Increase regional and national collaboration to ensure consistency among vulnerability assessment mapping tools and approaches.
11. Create an annual engagement plan and a toolkit of communication and engagement resources.
12. Advance understanding of and engage with partners on the environmental impacts of wasted food and the beneficial uses of compost application to soil.
13. Pilot project to streamline interagency coordination on federally supported climate resilience efforts in selected Region 3 communities.
14. Understanding carbon storage/sequestration implications of local decision-making.
15. Create a framework for strategic, multi-scale (landscape-scale to site-scale) planning for coastal wetland restoration.
16. Partnerships and grants adaptation review.
17. Innovative advancements in lake and wetland monitoring with imagery and machine learning modeling.
18. Develop a fine-scale stream network temperature model for Chesapeake Bay Watershed.
19. Expanding the Wetland Regional Monitoring Program.
20. Provide Training for ECAD and ORC to Incorporate Climate Adaptation Considerations in Enforcement Cases.

# Updates from the Region 3 Climate Program



U.S. Environmental Protection Agency  
Mid-Atlantic Region



Agencia de Protección Ambiental de EE. UU.  
Región del Atlántico Medio

## CLIMATE ADAPTATION IMPLEMENTATION PLAN

## PLAN DE IMPLEMENTACIÓN DE LA ADAPTACIÓN AL CAMBIO CLIMÁTICO

Propósito: por el mejoramiento climático. Colaboración de la Región III de la EPA. EE. UU. Octubre de 2022.



Sample Climate Adaptation Action Template

**Action Title:** [Blank]

**Climate Threat:** [Icons: Heat, Flood, Drought, etc.]

**Overarching Goal(s):** [Icons: APG 1-6]

**Annual Performance Goal:** APG 1 APG 2 APG 3 APG 4 APG 5 APG 6

**Activity Timeframe:** FY22 FY23 FY24 FY25 FY26

**Climate Vulnerability:** [Blank]

*(Reference to pertinent topics covered in Chapter 2)*

**Action:**

**Description:** [Blank]

**Metric(s):** [Blank]

**Project Challenges:** [Blank]

**Co-benefits:** [Blank]

**Owner Email:** [Blank] **New Work?** [Blank] **Resources Available?** [Blank]

**Science Needs:** [Blank]

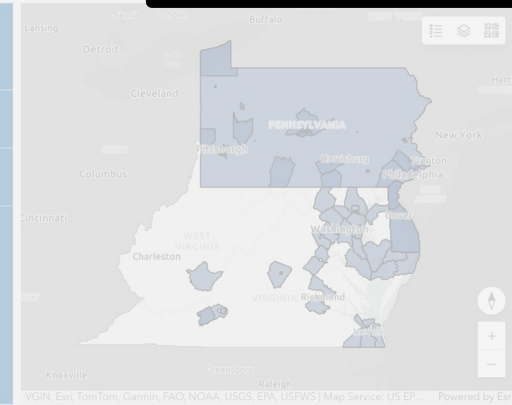
**Region 3 Climate Plan Dashboard**  
Did we miss something? To request that a climate plan be...

**Map Filters**

**Filter by State**  
No category selected

**Filter by Focus**  
No category selected

**Climate Plan by Year**  
No category selected



**Localities Covered by a Climate Plan**

# 122

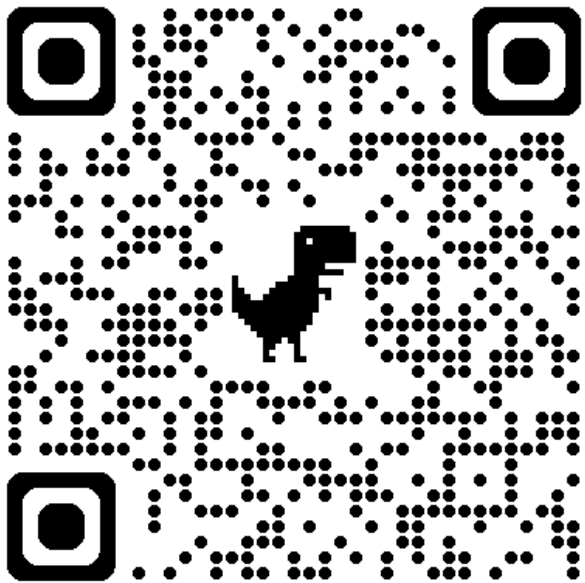
(Filtered)

Title	Climate Plan
2.0 The Foundation for t...	<a href="#">Link to Climate Plan</a>
Act 167 Scope of Study ...	<a href="#">Link to Climate Plan</a>
Action Plan for the Grea...	<a href="#">Link to Climate Plan</a>
ADAMS COUNTY Coun...	<a href="#">Link to Climate Plan</a>
Arlington Initiative Rethi...	<a href="#">Link to Climate Plan</a>

Action Title	Measure	2022	2023	2024	2025	2026
<b>COMPLETED</b>						
<b>Finalize Region III Climate Adaptation Implementation Plan.</b>						
<i>Percent completion of final plan.</i>		100%				
<b>Deploy the EPA Region III Climate National Priorities List (NPL) Flooding and Vulnerability Tool.</b>						
<i>Deployment of training- track number of employees trained FY22.</i>		102%				
<i>Development of a SOP for use FY22.</i>		100%	100%			
<i>Refine the users guide for roll out to project managers for full implementation of the tool. (FY24)</i>				20%		
<i>Measure implementation of tool for standard use by tracking number of times utilized (FY24/25).</i>				0%	0%	
<b>Support climate resilient infrastructure.</b>						
<i>Number of water and wastewater systems receiving technical assistance and training, including capacity development, system optimization, climate resilience and operator certification.</i>		100%	0%	0%		
<i>Number of times we share climate tools to states, local governments and water and wastewater systems to help mainstream adaptation and mitigation and encourage investments in resilient infrastructure.</i>		122%	220%	40%		
<i>Number of collaboration opportunities with states.</i>			100%	40%		
<i>Number of loans/dollar amounts in projects for disadvantaged communities related to climate adaptation.</i>			200%	0%		
<b>Build and maintain coastal climate resiliency through Blue Carbon resources.</b>						
<i>Develop the project scope, identify research needs, and submit proposals for funding (FY22).</i>		100%				
<i>Select a partner community, develop an engagement plan and identify partner and community science needs (FY23).</i>		100%	70%	53%		
<i>Create a method for blue carbon assessment, identify relevant datasets and create maps (FY 23/24).</i>			100%	50%		
<i>Share the assessment and mapping results with Bay Program partners and stakeholders (FY24).</i>				0%		

# Tracking Climate Successes

Action Title	Measure	2022	2023	2024	2025	2026
<a href="#">Finalize Region III Climate Adaptation Implementation Plan.</a>		<b>COMPLETED</b>				
	<i>Percent completion of final plan.</i>	100%				
<a href="#">Deploy the EPA Region III Climate National Priorities List (NPL) Flooding and Vulnerability Tool.</a>						
	<i>Deployment of training- track number of employees trained FY22.</i>	102%				
	<i>Development of a SOP for use FY22.</i>	100%	100%			
	<i>Refine the users guide for roll out to project managers for full implementation of the tool. (FY24)</i>			20%		
	<i>Measure implementation of tool for standard use by tracking number of times utilized (FY24/25).</i>			0%	0%	
<a href="#">Support climate resilient infrastructure.</a>						
	<i>Number of water and wastewater systems receiving technical assistance and training, including capacity development, system optimization, climate resilience and operator certification.</i>	100%	0%	0%		
	<i>Number of times we share climate tools to states, local governments and water and wastewater systems to help mainstream adaptation and mitigation and encourage investments in resilient infrastructure.</i>	122%	220%	40%		
	<i>Number of collaboration opportunities with states.</i>		100%	40%		
	<i>Number of loans/dollar amounts in projects for disadvantaged communities related to climate adaptation.</i>		200%	0%		
<a href="#">Build and maintain coastal climate resiliency through Blue Carbon resources.</a>						
	<i>Develop the project scope, identify research needs, and submit proposals for funding (FY22).</i>	100%				
	<i>Select a partner community, develop an engagement plan and identify partner and community science needs (FY23).</i>	100%	70%	53%		
	<i>Create a method for blue carbon assessment, identify relevant datasets and create maps (FY 23/24).</i>		100%	50%		
	<i>Share the assessment and mapping results with Bay Program partners and stakeholders (FY24).</i>			0%		





# Updates from the Region 3 Climate Program



U.S. Environmental Protection Agency  
Mid-Atlantic Region



Agencia de Protección Ambiental de EE. UU.  
Región del Atlántico Medio

## CLIMATE ADAPTATION IMPLEMENTATION PLAN

## PLAN DE IMPLEMENTACIÓN DE LA ADAPTACIÓN AL CAMBIO CLIMÁTICO

Propósito: plan de implementación climática colaborativa de la Región III de la EPA. (EPA, 2022)



Sample Climate Adaptation Action Template

**Action Title:** [Blank]

**Climate Threat:** [Icons: Heat, Flood, Drought, etc.]

**Overarching Goal(s):** [Icons: APG 1-6]

**Annual Performance Goal:** [Icons: APG 1-6]

**Activity Timeframe:** [Icons: FY22-FY26]

**Climate Vulnerability:** [Reference to pertinent topics covered in Chapter 2]

**Action:**

**Description:**

**Metric(s):**

**Project Challenges:**

**Co-benefits:**

**Owner Email:** [Blank] **New Work?** [Blank] **Resources Available?** [Blank]

**Science Needs:**

Action Title	Measure	2022	2023	2024	2025	2026
<b>COMPLETED</b>						
Finalize Region III Climate Adaptation Implementation Plan.						
Percent completion of final plan.		100%				
Deploy the EPA Region III Climate National Priorities List (NPL) Flooding and Vulnerability Tool.						
Deployment of training- track number of employees trained FY22.		102%				
Development of a SOP for use FY22.		100%	100%			
Refine the users guide for roll out to project managers for full implementation of the tool, (FY24)				20%		
Measure implementation of tool for standard use by tracking number of times utilized (FY24/25).				0%	0%	
Support climate resilient infrastructure.						
Number of water and wastewater systems receiving technical assistance and training, including capacity development, system optimization, climate resilience and operator certification.		100%	0%	0%		
Number of times we share climate tools to states, local governments and water and wastewater systems to help mainstream adaptation and mitigation and encourage investments in resilient infrastructure.		122%	220%	40%		
Number of collaboration opportunities with states.			100%	40%		
Number of loans/dollar amounts in projects for disadvantaged communities related to climate adaptation.			200%	0%		
Build and maintain coastal climate resiliency through Blue Carbon resources.						
Develop the project scope, identify research needs, and submit proposals for funding (FY22).		100%				
Select a partner community, develop an engagement plan and identify partner and community science needs (FY23).		100%	70%	53%		
			0%	50%		
				0%		

### Region 3 Climate Plan Dashboard

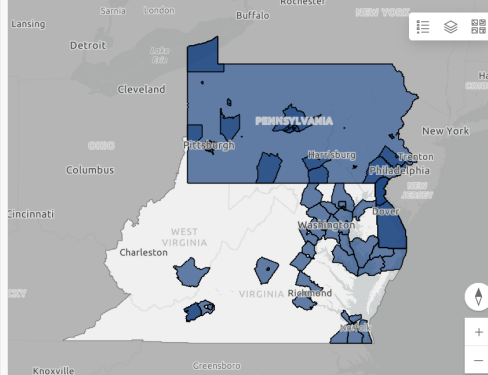
Did we miss something? To request that a climate plan be added to this site, please contact [konfrist.matthew@epa.gov](mailto:konfrist.matthew@epa.gov).

**Map Filters**

**Filter by State**  
No category selected

**Filter by Focus**  
No category selected

**Climate Plan by Year**  
No category selected



**Localities Covered by a Climate Plan**

# 122

(Filtered)

Title	Climate Plan
2.0 The Foundation for t...	<a href="#">Link to Climate Plan</a>
Act 167 Scope of Study ...	<a href="#">Link to Climate Plan</a>
Action Plan for the Grea...	<a href="#">Link to Climate Plan</a>
ADAMS COUNTY Coun...	<a href="#">Link to Climate Plan</a>
Arlington Initiative Rethi...	<a href="#">Link to Climate Plan</a>



# Region 3 Climate Plan Dashboard

Created by RGAP (August 2023)



## Map Filters

### Filter by State

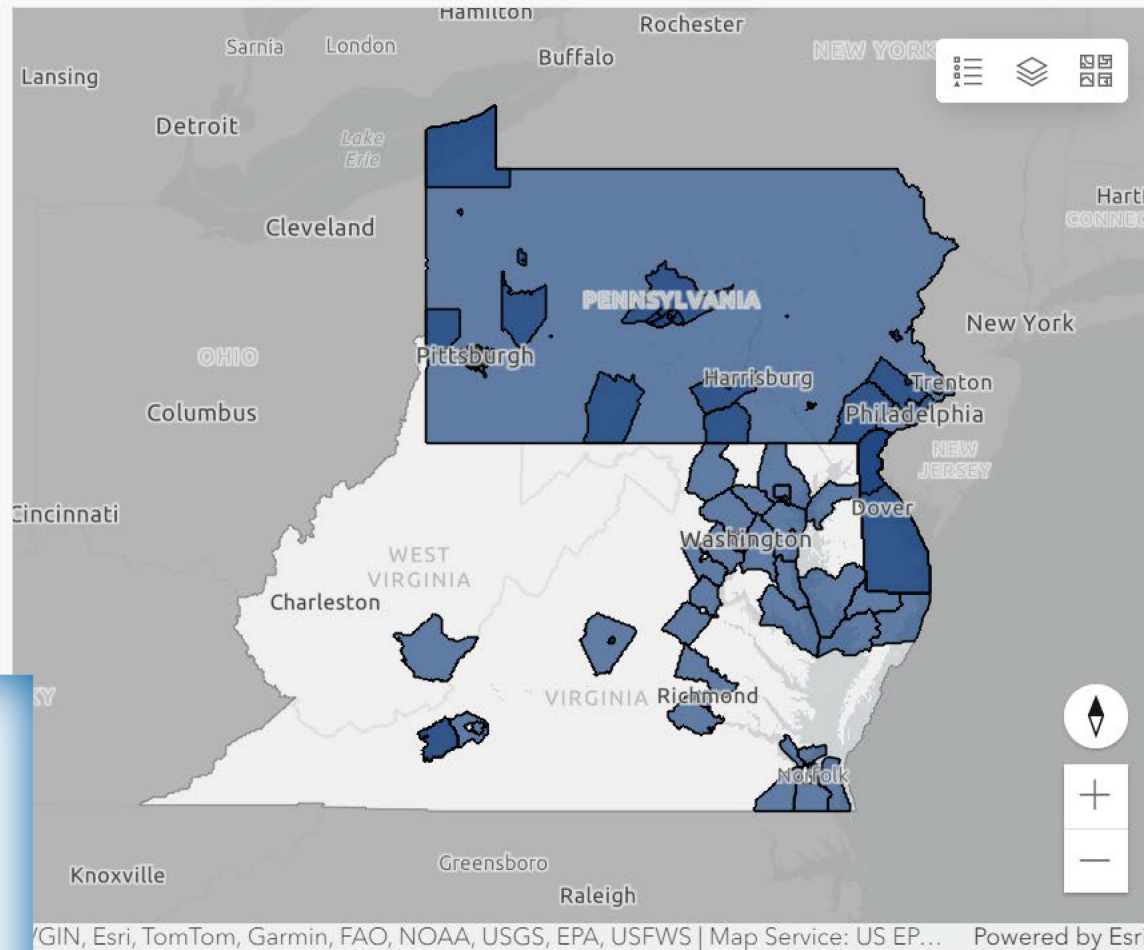
No category selected

### Filter by Focus

No category selected

### Climate Plan by Year

No category selected



## Localities Covered by a Climate Plan

# 122

(Filtered)

Title	Climate Plan
2.0 The Foundation for t...	<a href="#">Link to Climate Plan</a>
Act 167 Scope of Study ...	<a href="#">Link to Climate Plan</a>
Action Plan for the Grea...	<a href="#">Link to Climate Plan</a>
ADAMS COUNTY Coun...	<a href="#">Link to Climate Plan</a>
Arlington Initiative Rethi...	<a href="#">Link to Climate Plan</a>



# Priority Actions with Community Engagement

- Support climate resilient infrastructure
- Build and maintain coastal climate resiliency through Blue Carbon Resources
- Engage Region 3 Tribes in a meaningful dialogue on climate change adaptation and resilience.
- Engage Superfund communities on climate.
- Create an annual engagement plan and toolkit of communication and engagement resources.
- Convene a quarterly meeting with Region 3 jurisdictions to coordinate across the Mid issues.
- Resilience capacity building in Environmental Justice/Social Justice Communities for climate change planning.
- Convene a “Watershed Partnerships Workshop” to address climate adaptation at the watershed scale.
- Advance understanding of and engage with partners on the environmental impacts of wasted food and the beneficial uses of compost application on soil.
- Pilot project to streamline interagency coordination on federally supported climate resilience efforts in selected Region 3 communities.