

# Quenching Payne's Thirst for Learning & Growing

Lexi Smith  
Payne Parent  
Grant Team Lead



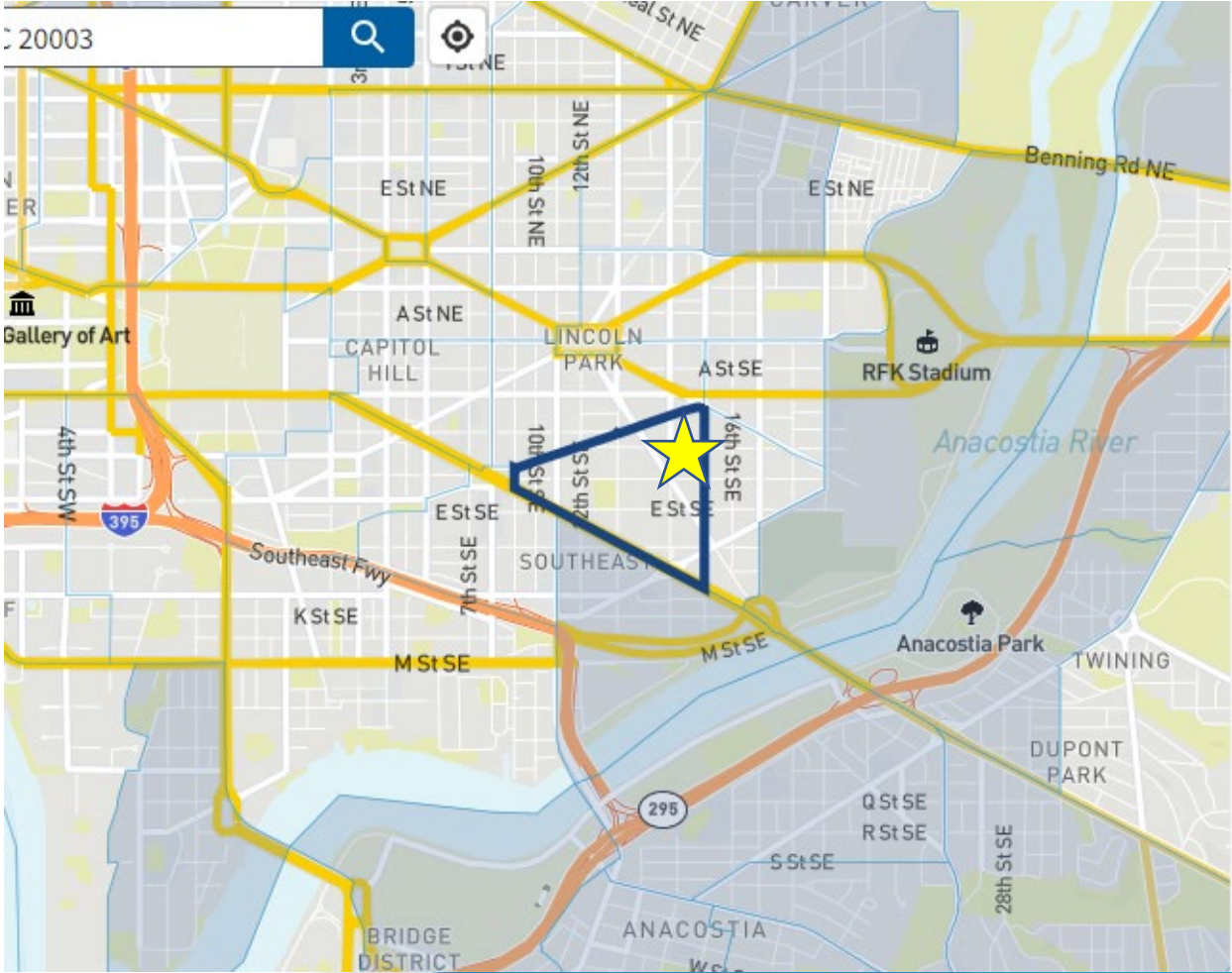
# Background

- **Grant:** Green Streets, Green Jobs, Green Towns Grant  
Program Track 4: Community Greening
- **Donor:** Chesapeake Bay Trust
- **Recipient :** Payne Elementary School PTSA, Washington DC
- **Funding Amount:** \$50,000
- **Date Awarded:** July 2023



# Location

★ 1445 C St SE  
Washington, DC



Transportation +

Water and wastewater -

**Underground storage tanks and releases** 98th  
above 90th  
percentile  
Formula of the density of leaking underground storage tanks and number of all active underground storage tanks within 1500 feet of the census tract boundaries

**Wastewater discharge** 55th  
not above 90th  
percentile  
Modeled toxic concentrations at parts of streams within 500 meters

AND

# Background

## 380 Prek3 – Fifth Grade Students:

- 100% of students receive free or reduced lunch, and 32% are at risk.
- Demographic
  - 53% African American
  - 35% White
  - 6% Hispanic/Latino
  - 5% multi-race
- Payne houses program for deaf and hard of hearing students & students with emotional disabilities

1896

- Originally built to serve African American students during a time when DC schools were segregated by race

2001-2018

- Payne was in-bound school for DC General Family Shelter, providing school services for marginalized communities

2014-2016

- Building modernization: The property had remained unchanged until now

Renovation did not include replacing **lead pipes** or installing of attached gutter system, which contribute to ongoing **water problems** (dry area and flooded areas from run off) which this project serves to resolve

# Why did we apply for this grant?

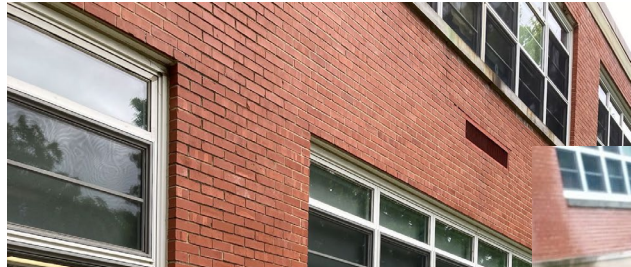
- Social Emotional Learning (SEL) after COVID
  - Environmental Education Field Trips
  - FreshFarm FoodPrints
  - Chickens
- Prior experience with “smaller” grants from Chesapeake Bay Trust
- Long standing stormwater runoff issues at the school
- Support from school custodial staff

# Payne Environmental Education

- Field trips funded by CBT
- FRESHFARM FoodPrints
- Payne Chickens



# First Action Project: Stormwater Management



# Project Details

\$50,000 for Community Greening to rehabilitate the school grounds including stormwater management (downspouts and rain gardens), pollinator gardens and green barrier on the School Campus at 1445 C St SE in Washington DC

1. Installing downspouts and rain gardens
  2. Installing green barrier for pollinators
  3. Installing modular beds for use during school day
- **Project Partners:** Volunteers, FoodPrints, GingkoGardens, Love&Carrots, Reliable Electrical Services Technology Inc,





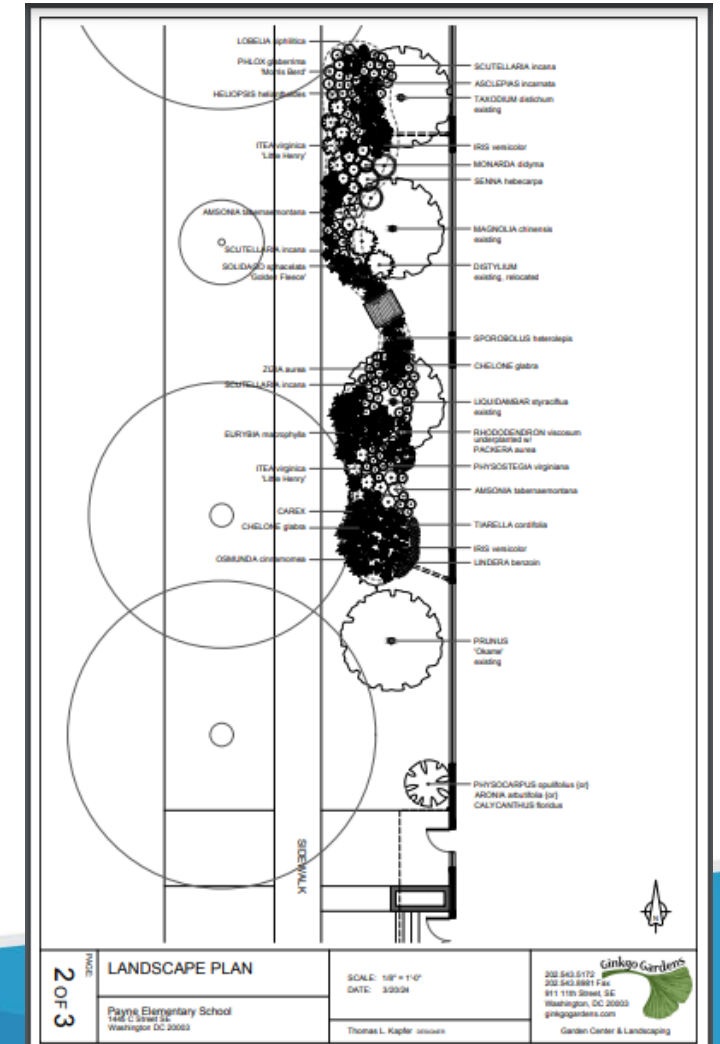
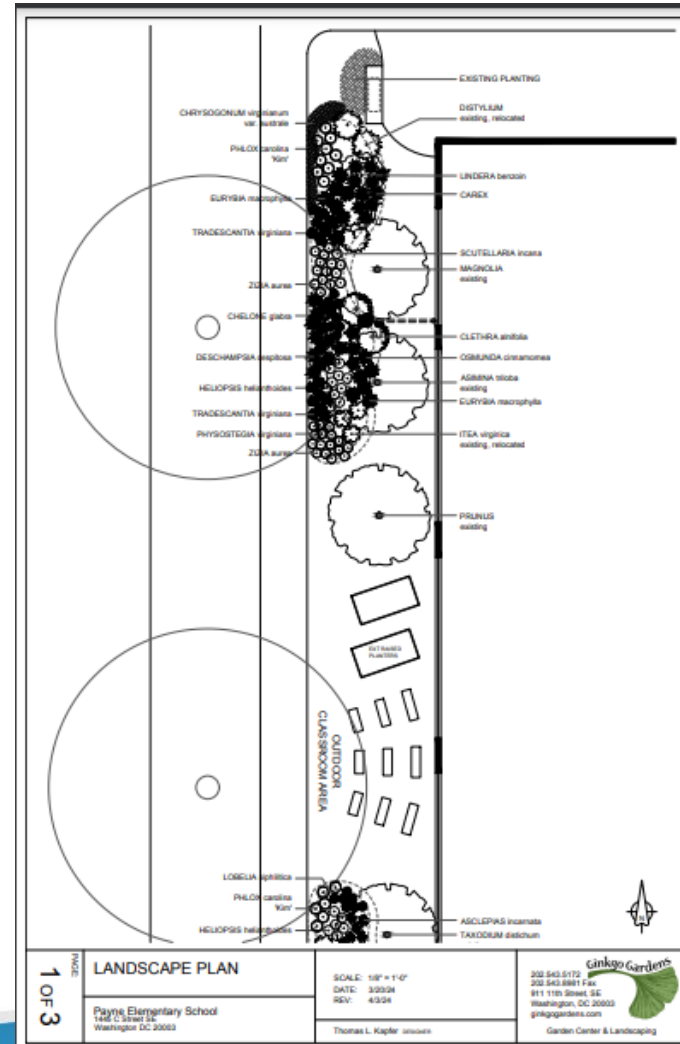
# Downspouts Installed

- Downspouts Installed
  - Extended away from building
  - Will attach to rain gardens
- 
- **Partner:** Reliable Electrical Services Technology Inc



# Rain Garden Plan

- Utilizes existing plants
- Three rain garden areas from three downspouts
- Lower maintenance
- Colorful
- **Partner: GingkoGardens**



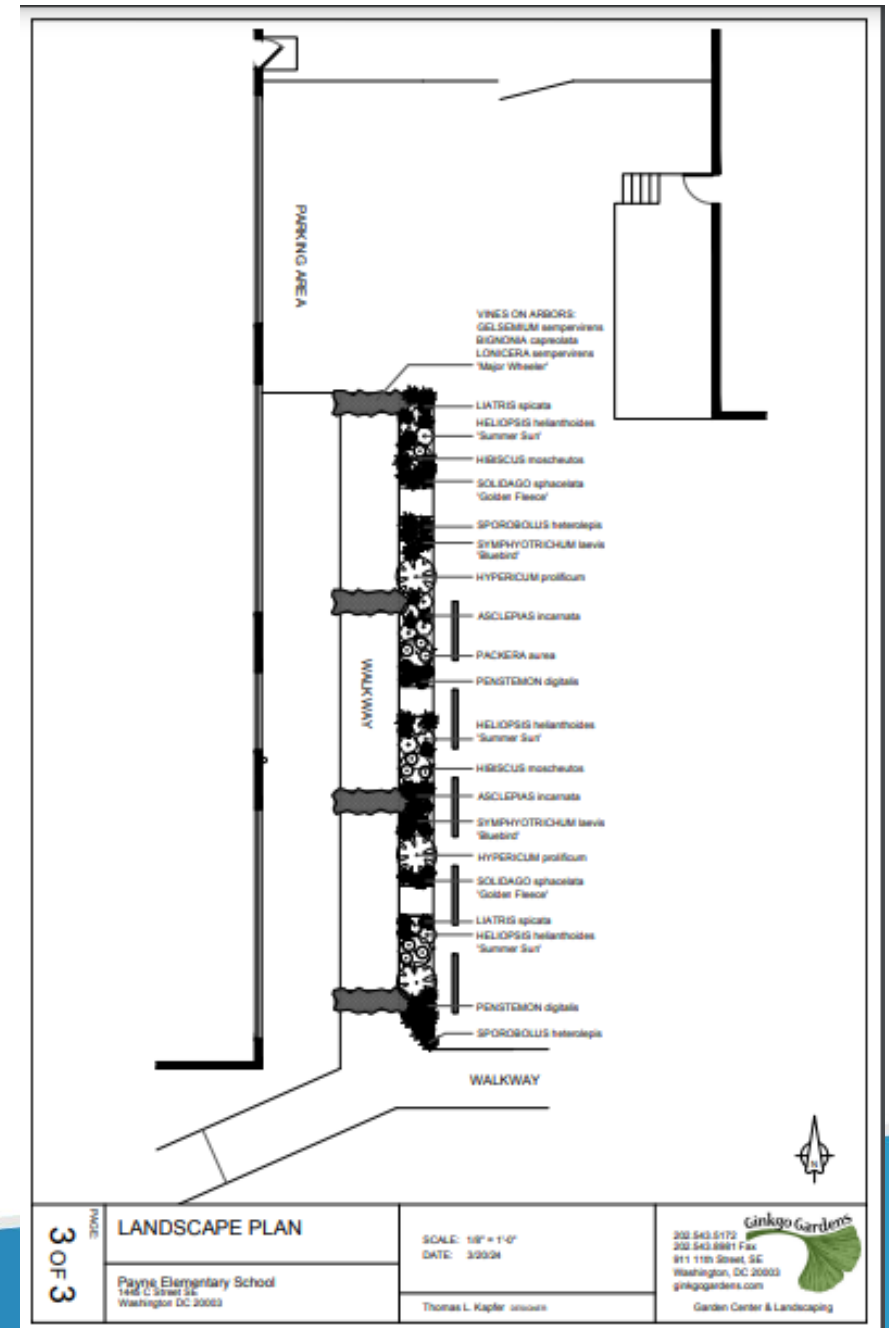
# Modular Vegetable Beds with Irrigation

- Five 2'x9.5'x17" modular garden beds
- Filled with dirt, sticks, leaves and compost
- Irrigation installed
- **Partners:** Vego Garden Beds, DC DPW, DDOT, DC Compost Pilot, Veterans Compost, Love & Carrots and FoodPrints



# Green Barrier

- Removing existing asphalt
- Pollinator garden between parking lot and vegetable garden
  - Barrier from exhaust
  - Pollinators for vegetables
- Porous surface for stormwater
- Increased plant variety
- **Partner:** GinkgoGardens



# Teamwork Makes the Dream Work

- This is a huge team effort. The grant was written by multiple parents and implementation has included even more.
- We could not do it without the absolute and complete support of Principal Byrd and Head Custodian Joey Abney
- Thank you to all our partners and for DC Public Schools and DC Public School Facilities for partnering with us.
- Thank you to Chesapeake Bay Trust and EPA for their generous support and allowing schools and environmental education to receive grant support.

# Questions

Lexi Smith

Payne PTSA

lexiasmith@gmail.com