



**PHS**

# Pennsylvania Horticultural Society

How Does Your Garden Grow? Farming to Sustain  
Communities

Adam Hill - Program Director, Community Gardens, Pennsylvania Horticultural Society  
May 16, 2024



# agenda

01. About PHS

02. Impact Priorities

03. Healthy Neighborhoods

04. Community Gardens &  
Urban Agriculture in  
Philadelphia

05. PHS Community Gardens  
Program

06. Questions



## Vision of PHS

- The Pennsylvania Horticultural Society uses horticulture to advance the health and well-being of the Greater Philadelphia region.
- We are a diverse community of people and organizations who believe in the power of horticulture to make positive social and environmental change.
- PHS believes that gardening and horticulture belong to everyone.

# PHS IMPACT PRIORITIES



# Healthy Neighborhoods

PHS Impact Priority Programs that Make Neighborhoods Healthy and Vibrant



**Community Gardens**



**Tree Programs**

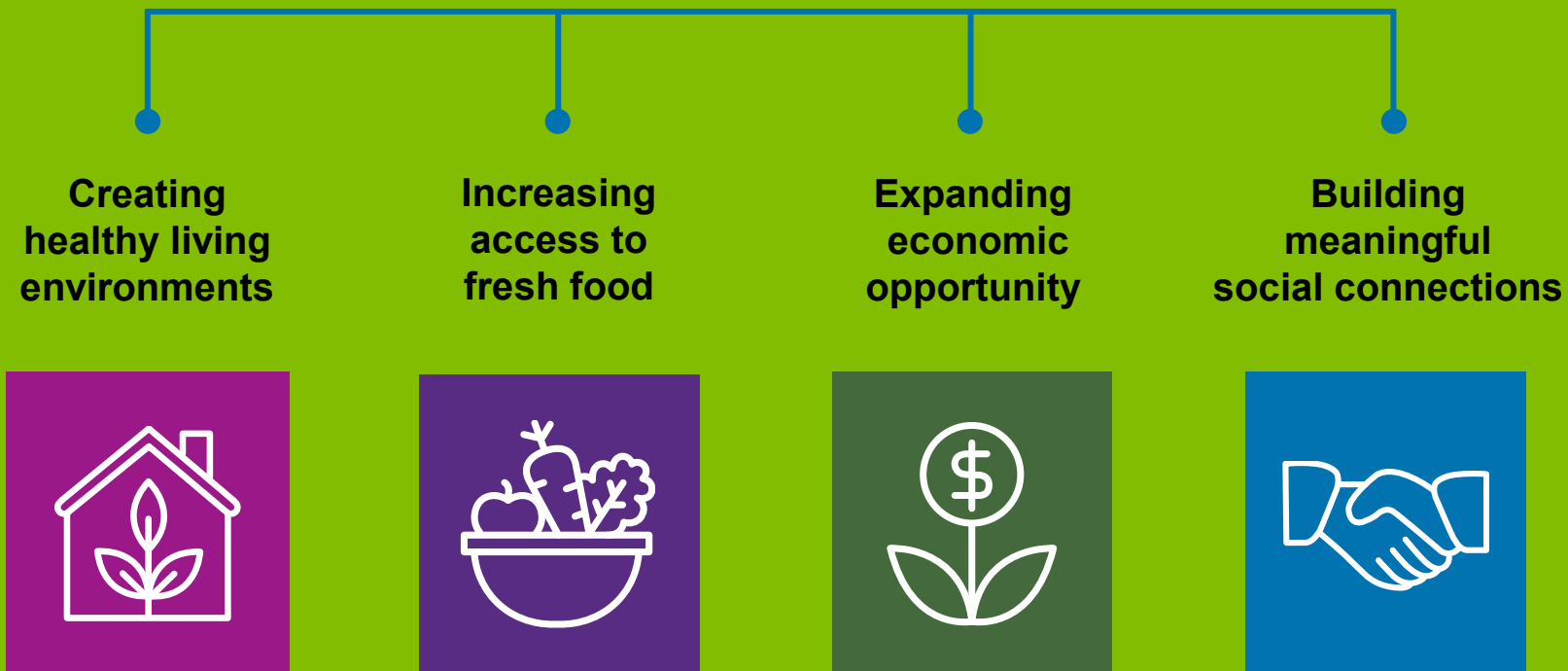


**Stormwater Solutions**



**Transforming Vacant Land and Workforce Development**

# COMMUNITY GARDENS

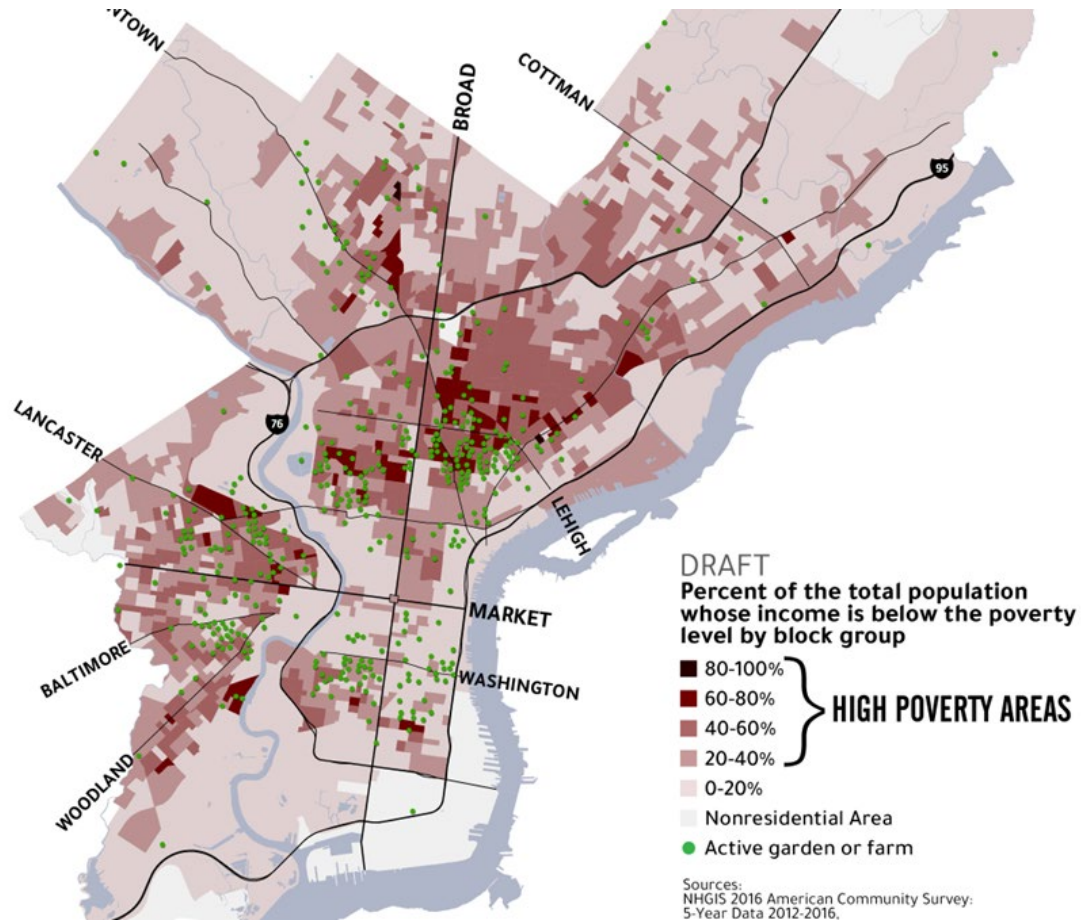




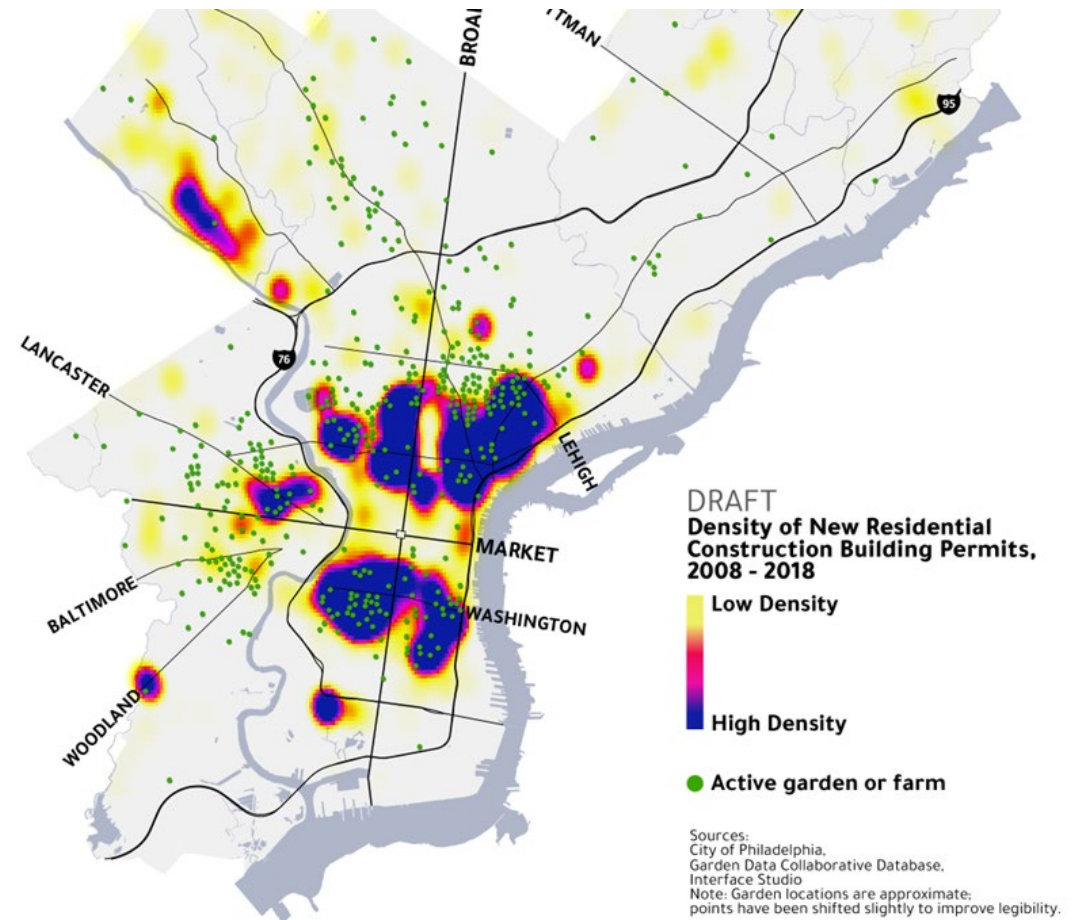
## Building More Resilient Communities

- Community and cooperative gardens are assets to our cities
- Increase access to fresh produce
- Elevate food sovereignty especially in communities experiencing food apartheid
- Build social cohesion
- Preserve and celebrate cultures

# The Story of Urban Farming



67% of gardens and farms exist in areas of the city with higher than average poverty rates.



Due to rampant development, gardens are vanishing. In the span of a short time, over 140 gardens and farms have been lost.





**Gardening is a part of our culture in Philly and at PSH**

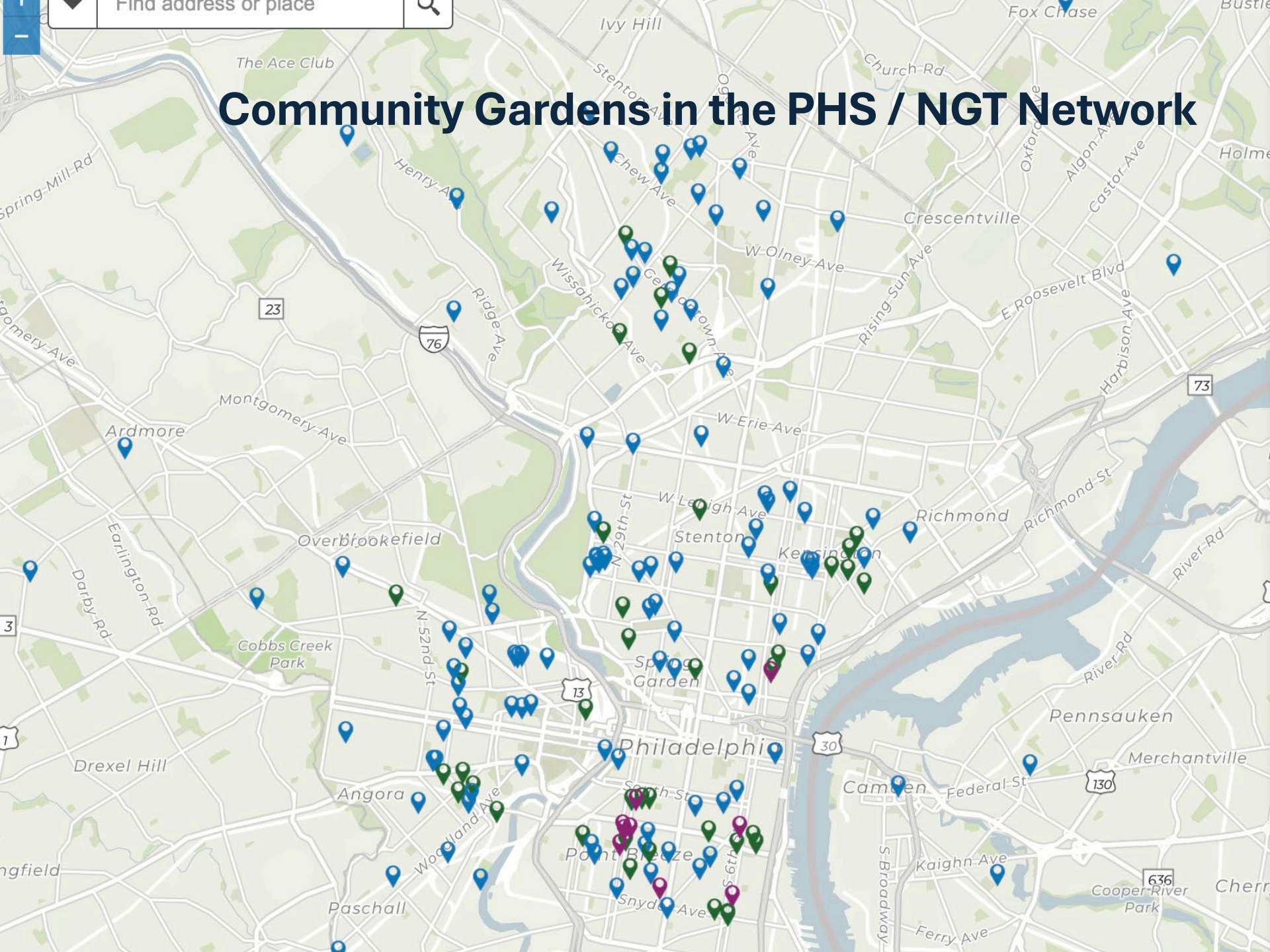


## PHS and Community Gardens

- Community gardens increase access to fresh produce while strengthening social connections between neighbors.
- PHS provides gardening materials and aid advocacy for urban farming
- Offers gardening workshops throughout the year taught by local leaders in the gardening community.
- With our partners at [Neighborhood Gardens Trust](#), we work with community gardens to protect open spaces.






# Community Gardens in the PHS / NGT Network



Legend



Philadelphia Community Gardens, supported by:

-  The Pennsylvania Horticultural Society (PHS) and the Neighborhood Gardens Trust (NGT)
-  PHS
-  NGT

# PHS Community Gardens Program

## The 3 Garden Types



**Emerging Garden**



**Established Garden**



**Mature Garden**

March 27, April 3, 10, 17, 24

# Garden Tenders Spring Training Series

● WORKSHOPS   ● PHS MCLEAN LIBRARY   ● OUTDOOR GARDENING   ● COMMUNITY GARDENS



- Garden Tenders – How to Start and Sustain a Community Garden - <https://phsonline.org/events/garden-tenders-spring-24> .
- Green City Teachers (late June)
- Growing Organic Workshop Series



## PHS Community Gardens Supplies & Services



As a part of PHS's Community Gardens and City Harvest Programs, your garden has access to resources and services to facilitate your growing season and the future growth and development of your garden.

### MCLEAN URBAN AGRICULTURE TOOL LIBRARY

**Hours: Wednesday 4pm-6pm • Saturday 8:30am-10:30am**  
*(Hours are subject to change based on seasonality, holidays, and City Harvest distribution days)*

### GROWER SUPPLIES & TOOLS

#### Tools offered at the Tool Library

Our inventory includes:

- Power drills, pruners, hoes & shovels, weed whackers, mowers, tillers, a walk-behind tractor, safety gear, generators, seed screens and winnowers, saws, rakes.... the list goes on!

#### Grower Supplies offered at the Tool Library

We offer supplies for:

- Soil testing, pest management (including spray applications), cover crop seed, trellising supplies, mulch, salt hay, as well as lumber and soil by request.

### ORGANIZATIONAL & TECHNICAL SUPPORT

Support focused on helping uplift your garden's technical and organizational systems:

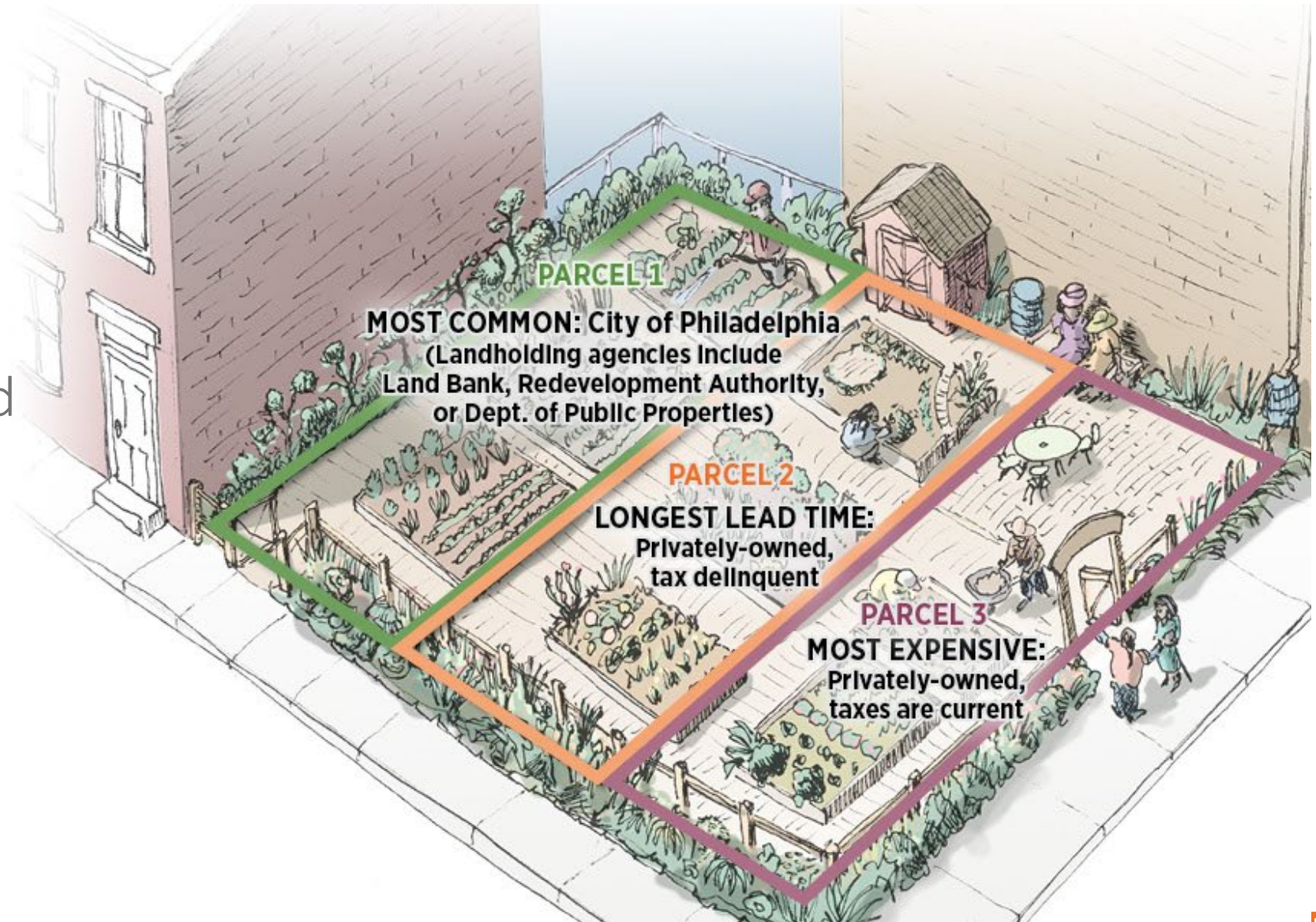
- Access to Workshop Series including "Growing Organic" and "Garden Tenders"
- Technical assistance from PHS staff
- Assistance organizing volunteer days
- Assistance developing garden leadership, bylaws, & conflict resolution



# Paths to Garden Preservation

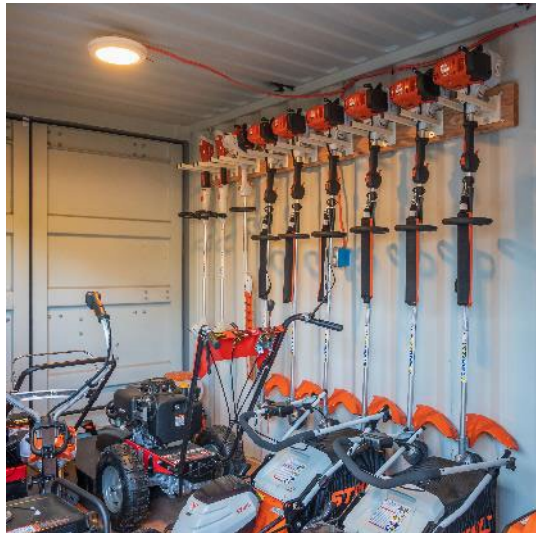
## WHO OWNS THIS GARDEN?

Many parcels, owners, and pathways to protection.





# PHS Tool Library





## McLean Urban Agriculture Tool Library 2024 Growers' Supplies



### Address:

Glenwood Green Acres  
1801 W Glenwood Avenue  
Philadelphia, PA 19132

### Hours:

Wednesdays 3PM - 6PM  
Saturdays 9AM - 12PM  
March 2 - October 12

### Fall Hours:

Wednesdays 3PM - 5PM  
Saturdays 9AM - 11AM  
October 16 - November 16

### How to Use the Tool Library

- Visit our Tool Library My-Turn Web-page to register and browse our inventory of free tool rentals. We carry a diverse selection of tools to facilitate community building and garden production.
- Tool Rentals are for one week
- Visit our requests page for lumber & soil requests

### Trellising

- 4' & 6' Stakes
- Tomato Clips
- "Tomahooks"
- Tomato Twine

### Mulch

- 4'x60' & 6'x60' Black Woven Ground Cover
- Sod Staples
- Salt Hay

### Pest & Disease Control

- 7'x80' Row Cover & Insect Netting
- Wire Hoops
- OMRI Listed Spray Applications: Neem Oil, Surround, DiPel, Regalia, Spinosad, Nu-Film
- Mosquito Dunks
- Sticky Traps
- Leaf-miner Sticky Traps

### Additional Offerings

- Soil Tests
- Compost
- Guide to Spray Applications (Safe usage and information)
- Seasonal Plant Materials (Ornamental Plants, Garlic, Shallots, etc.)

### Dates Closed

- April: Sat 6th
- May: Sat 11th, Sat 25th (Memorial Day Weekend)
- June: Sat 8th, Wed 19th (Juneteenth)
- July: Wed 3rd (July 4th Holiday)
- August: Sat 10th, Sat 24th (Labor Day Weekend)





**Project Support**



# Green Resource Centers



## Support

- Green house for growing seedlings
- Teaching locations
- Community Gardens

## Locations

- Green Resource Center at Strawberry Mansion
- Norristown Farm Park
- Bartram's Garden
- Awbury Arboretum



# PHS & Community Gardens





# thank you

@PHSgardening • #GardeningforGood



[PHSONline.org](http://PHSONline.org)