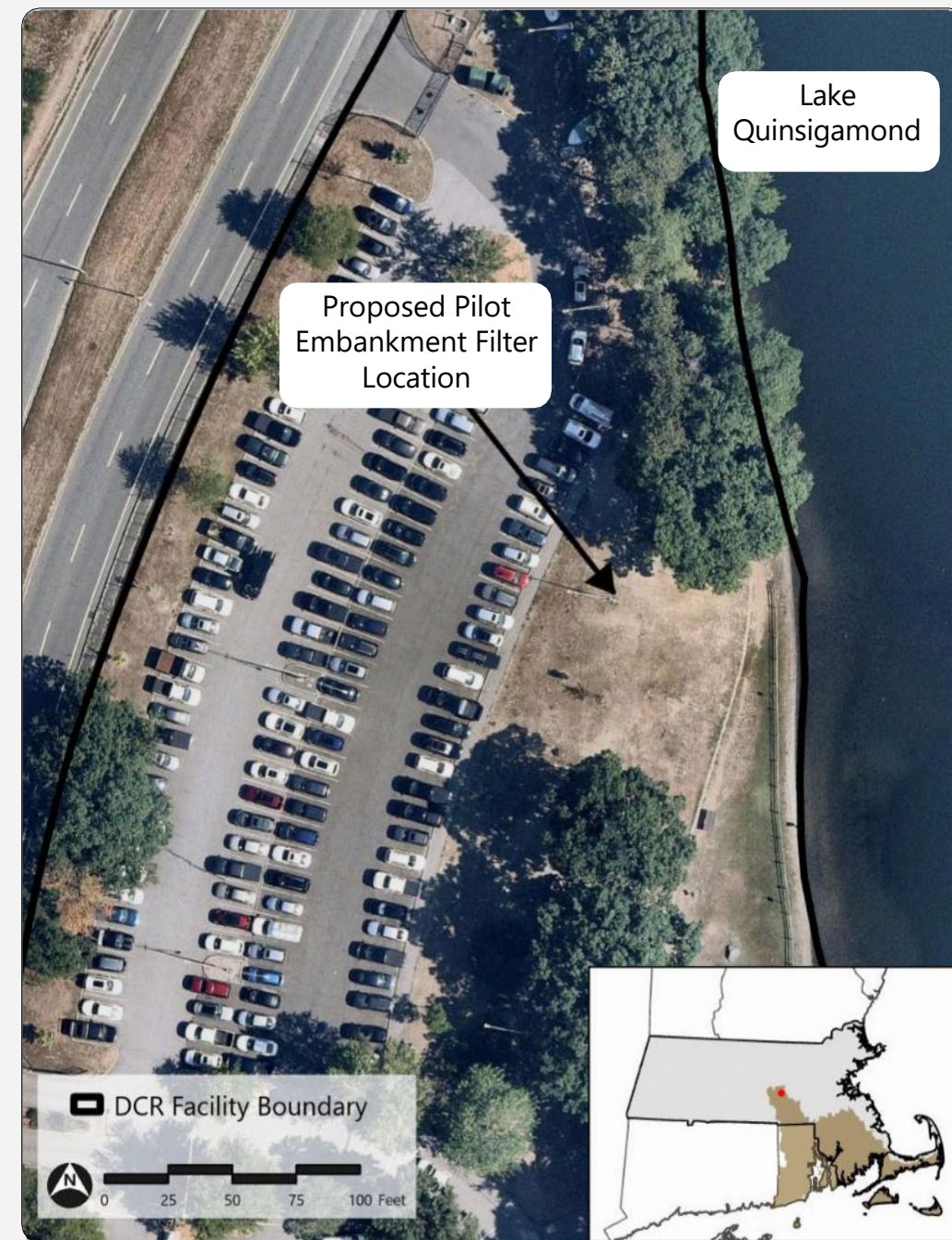




Piloting an embankment filter as a stormwater treatment practice for steep slopes

PROJECT SUMMARY: This project will consist of pilot design and installation of an embankment filter, a filtering stormwater control measure that can be installed on slopes that are typically considered too constrained for conventional stormwater controls. We will develop implementation documents including standard details, materials and construction specifications, and methods for estimating pollutant reduction using the EPA BMP Performance Curves. These will be shared with the greater New England stormwater community so this measure can be more readily incorporated in other locations.

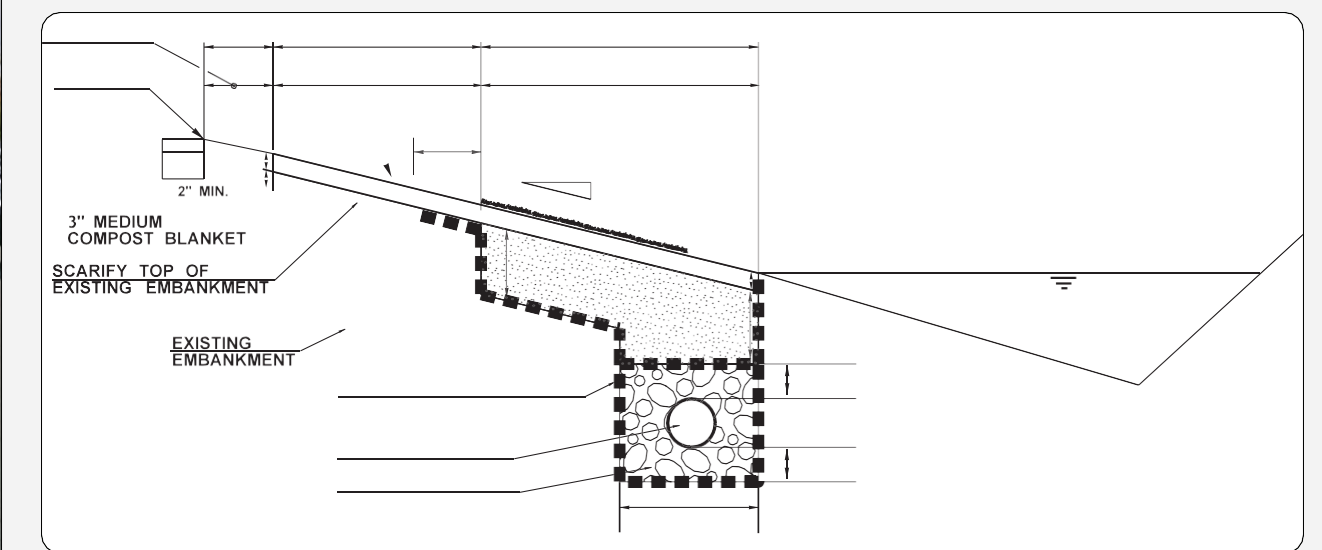
PROJECT BENEFITS: This project will have local impact, improving water quality at a public swimming beach plagued by beach closures and providing education to the environmental justice populations that use this beach. The project will also have regional impact by providing a new tool to designers working on constrained sites, thereby increasing the capacity of MS4 permittees and other stakeholders to complete projects.



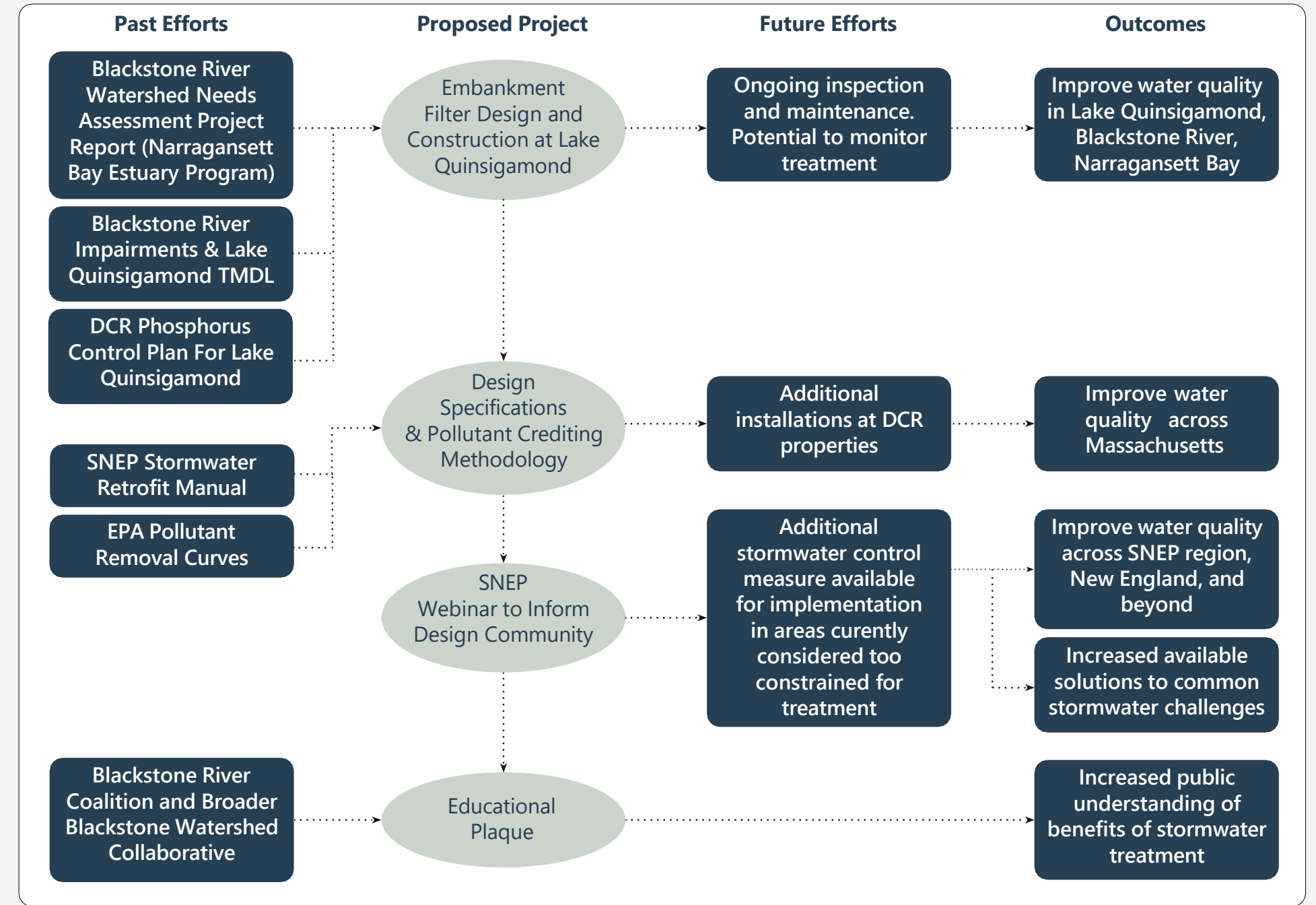
▲ Proposed site for pilot filter in Quinsigamond State Park, Worcester, MA.



◀ Google Street View image of proposed filter location and parking lot to be treated.



▲ Detail of a media filter drain, which is similar to this pilot practice, taken from the WSDOT Highway Runoff Manual.



▲ Impact diagram created for the SWIG grant application. Green circles indicate the grant-funded activities, while blue boxes show past and future efforts connected to these activities.

