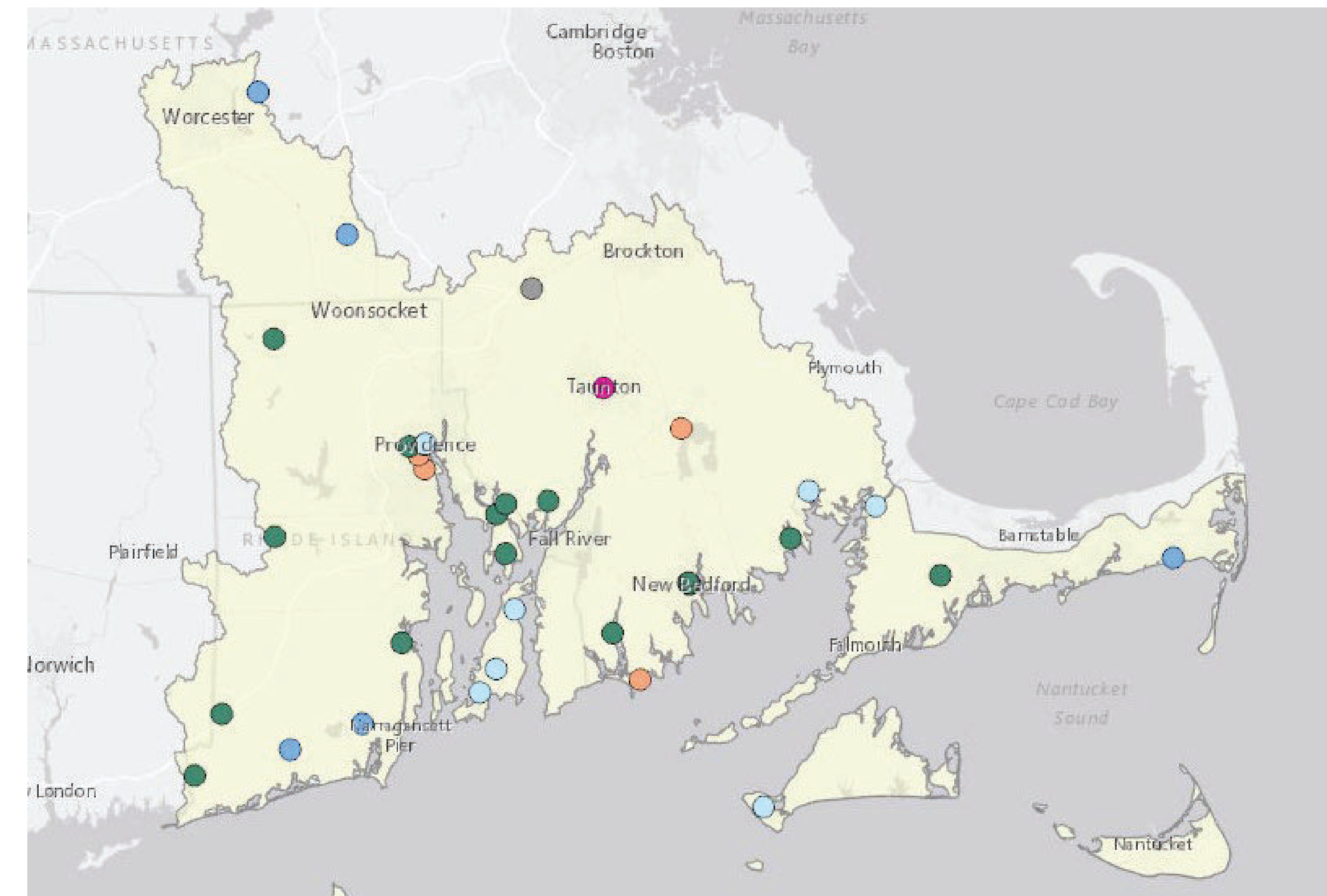


WHAT IS THE SNEP NETWORK?

The SNEP Network was launched in 2019 by the NEEFC and **15 partner organizations** with expertise in stormwater, watershed planning, funding and financing, leadership development and climate resiliency.

We offer **FREE** training, financial, and technical assistance to municipalities, Tribes, and non-profits in the SNEP region to help advance their level of practice and assist with moving them towards funding, financing, and implementation.



25+ SNEP Network Community Assistance Projects completed to date in the SNEP Region

How can I get FREE technical assistance?



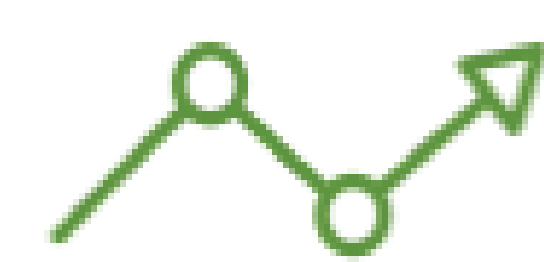
1 Identify your community's watershed, stormwater management and financing, or climate resilience needs.



2 Fill out our online assistance form to connect with your state Network liaison: snepnetwork.org/assistance-form

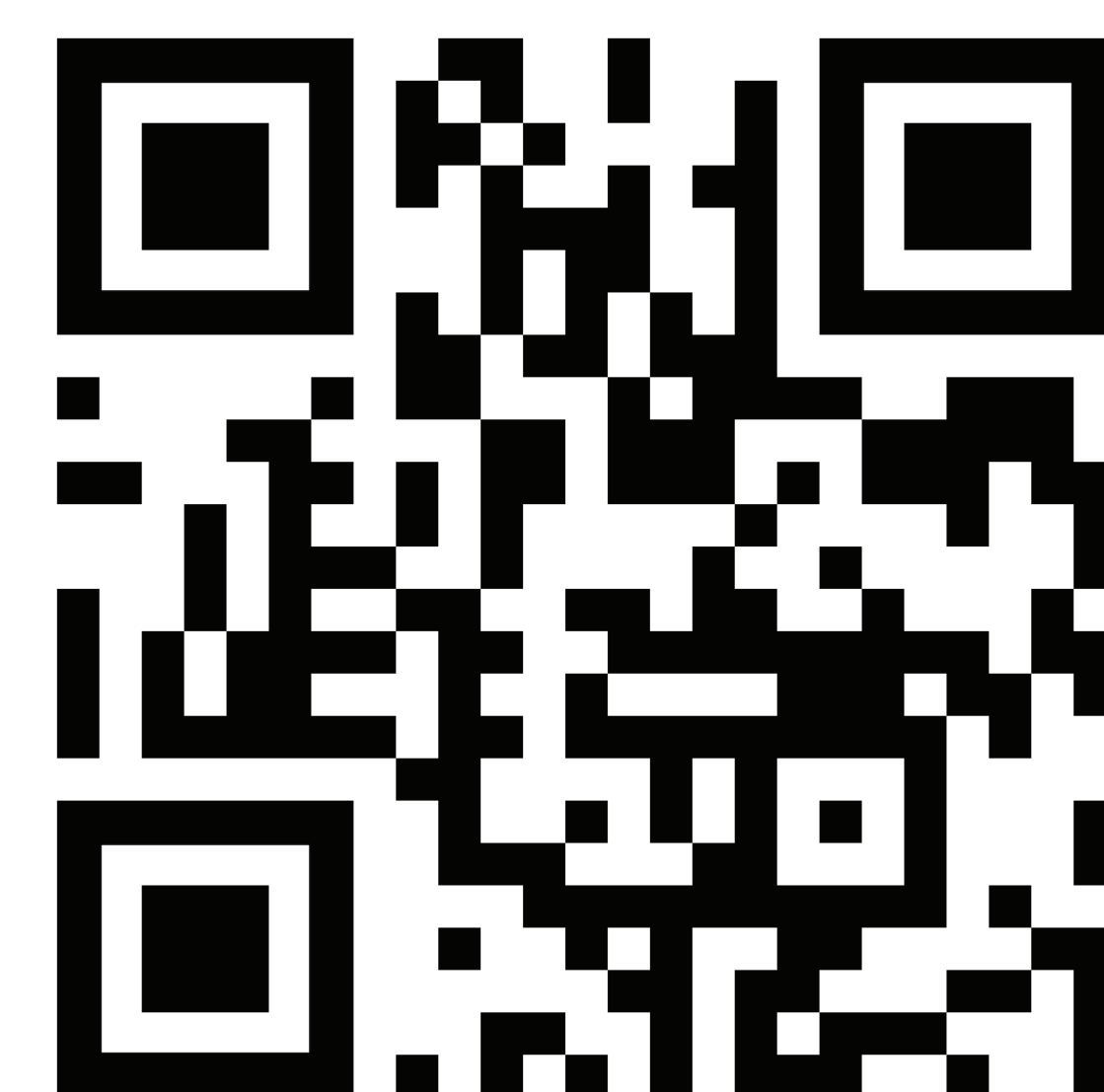


3 Your Network liaison will follow up and work with you to discuss the project needs



4 Your Network liaison will recommend next steps to working with the Network or point to other resources in the region.

SCAN BELOW TO LEARN MORE!



OUR COMMUNITY PROJECTS

- Creating a **Climate Resiliency and Infrastructure Stabilization Fund** for the Town of Bourne, MA
- Evaluating and implementing interim measures to **address nutrient pollution in Santuit Pond** with the Mashpee Wampanoag and the Town of Mashpee, MA
- Conducting **climate resilience and financing prioritization assessments** and facilitating an Aquidneck Island leadership exchange with Portsmouth, RI, Newport, RI, and Middletown, RI
- **Prioritizing nature-based solutions** projects that would help protect the Canoe River Aquifer, as part of a collaborative process with the Towns of Easton, Foxborough, Mansfield, Norton and Sharon, MA.
- Guiding SNEP communities through the process of **developing a conceptual design for a nature-based stormwater retrofit option** in their selected drainage area as part of the SNEP Network's Stormwater Planning Series
- Providing **bylaw review, low impact development ordinance training, assessment and technical assistance to SNEP communities**



Site Visit at Brooklawn Park, New Bedford, MA



Site Visit at Town Landing, Santuit Pond, Santuit, MA



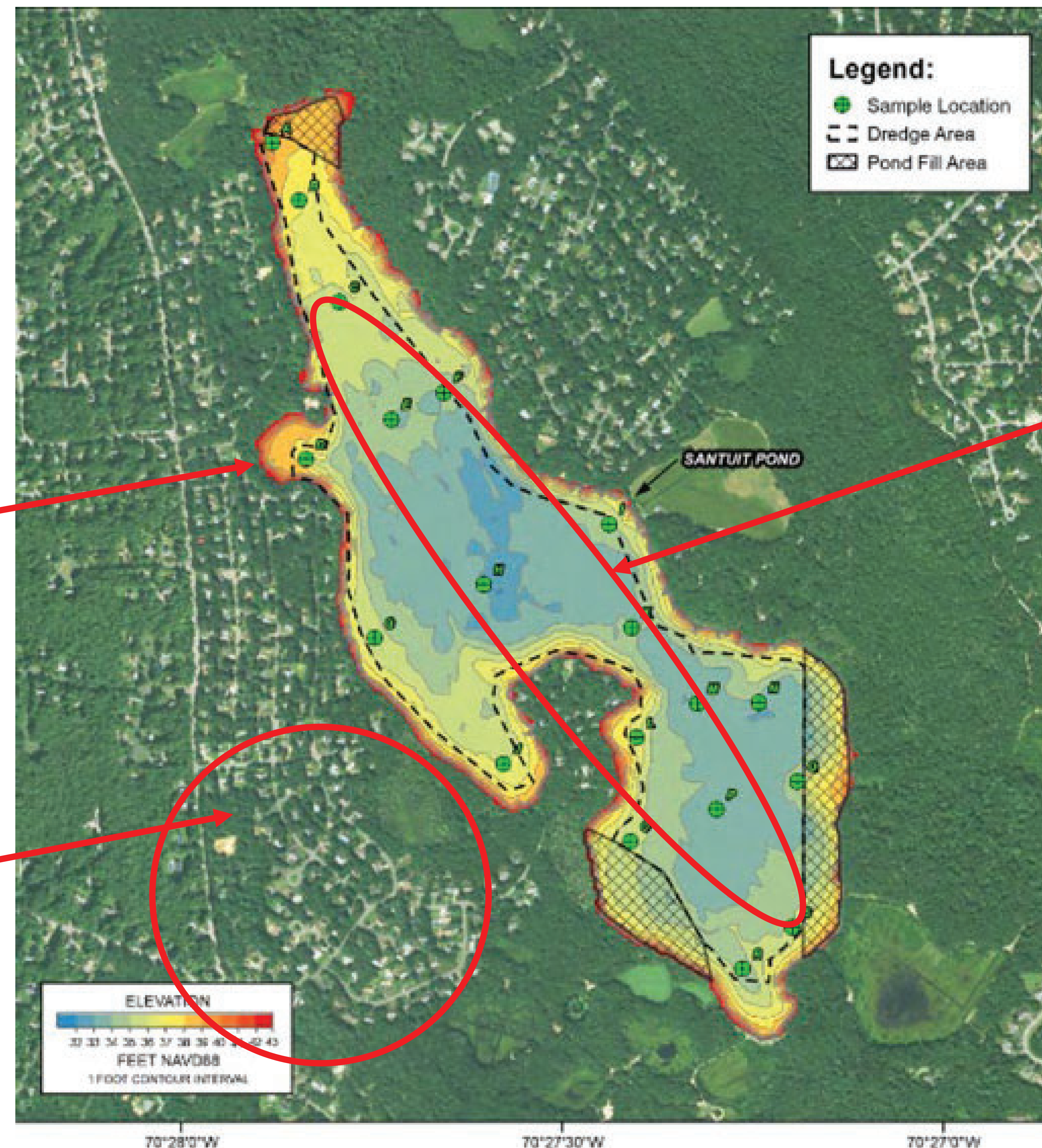
Flooding on Salt Marsh Lane, Bourne, MA during a moon tide storm event

Recipe for the Cleaning Up Santuit Pond

Address External Loads

Town of Mashpee

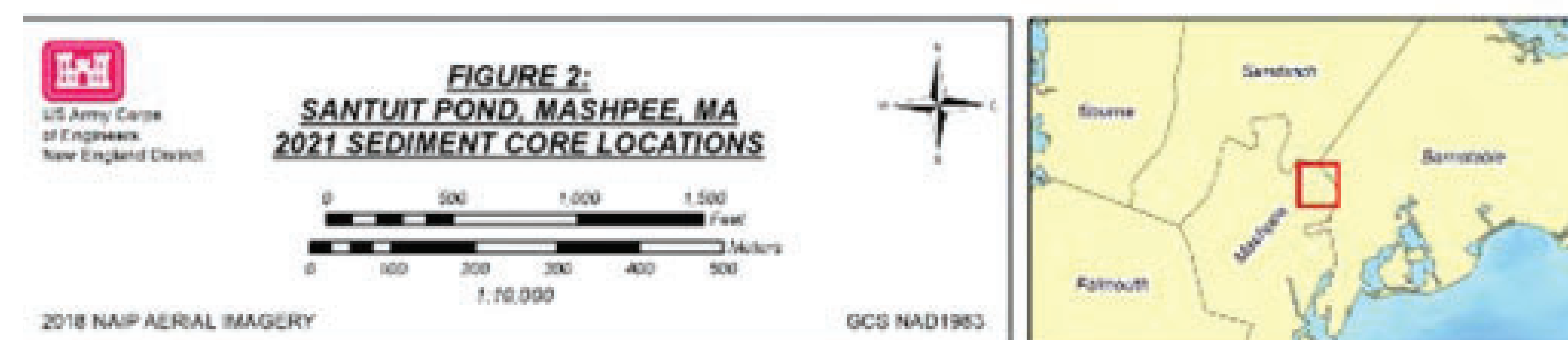
1. Town Sewer Collection and Treatment
2. Purchase and retire Cranberry Bogs
3. Stormwater Retrofit Training (UNH—Stormwater Center)
4. Santuit Pond Watershed Based Plan
5. MVP Action Grants—Stormwater Retrofit, Planning, Design, and Construction



Address External Loads

Mashpee Wampanoag Tribe

1. Army Corp of Engineers Sediment Dredge Study
2. Internal Phosphorus Load Feasibility Study
3. Baseline Monitoring, Sediment Inactivation Dosing Study
4. Sediment Inactivation Design
5. Seek funding to implement treatment



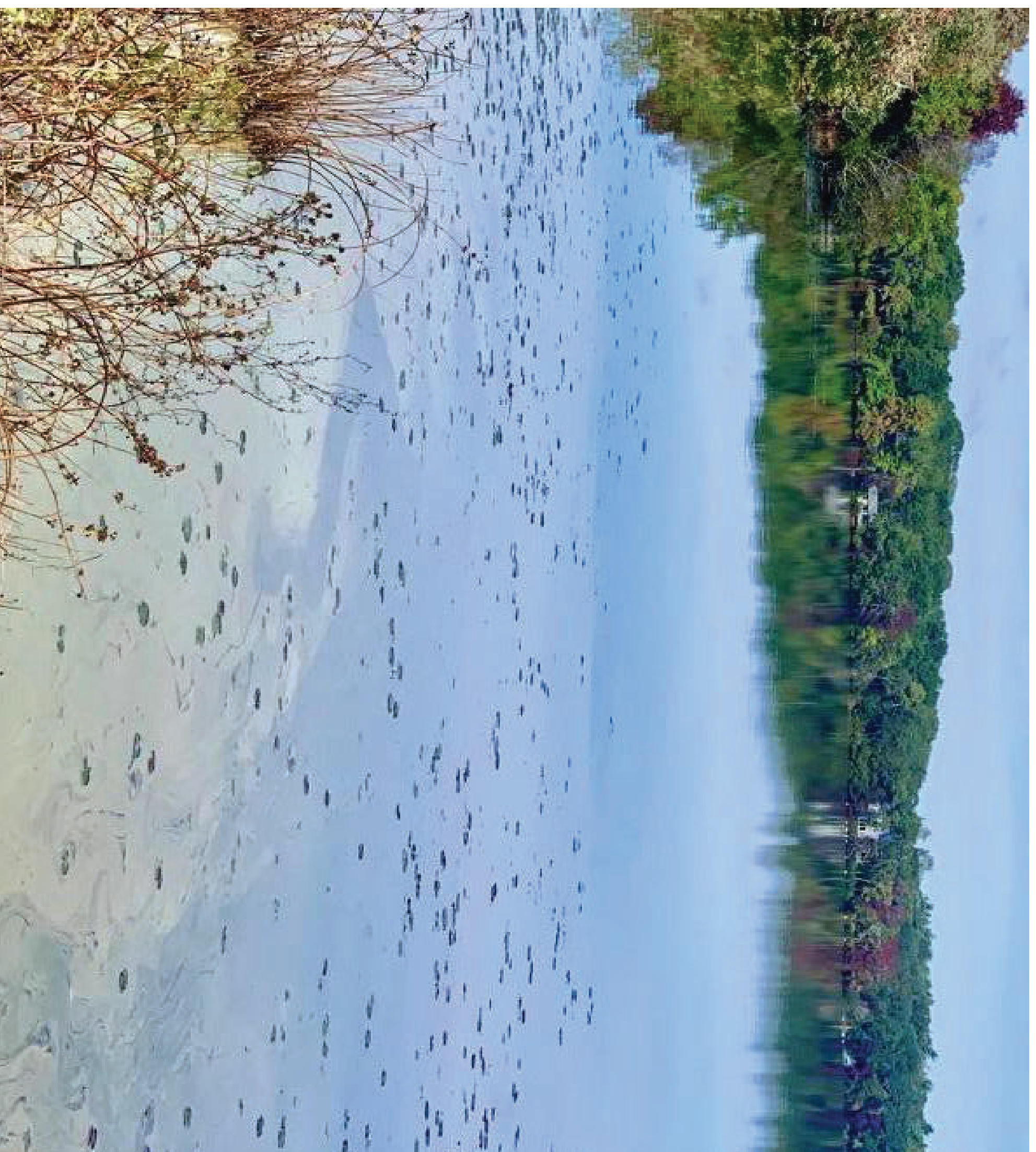
Visit the **Santuit Pond Learning Hub Today!** :



SANTUIT POND

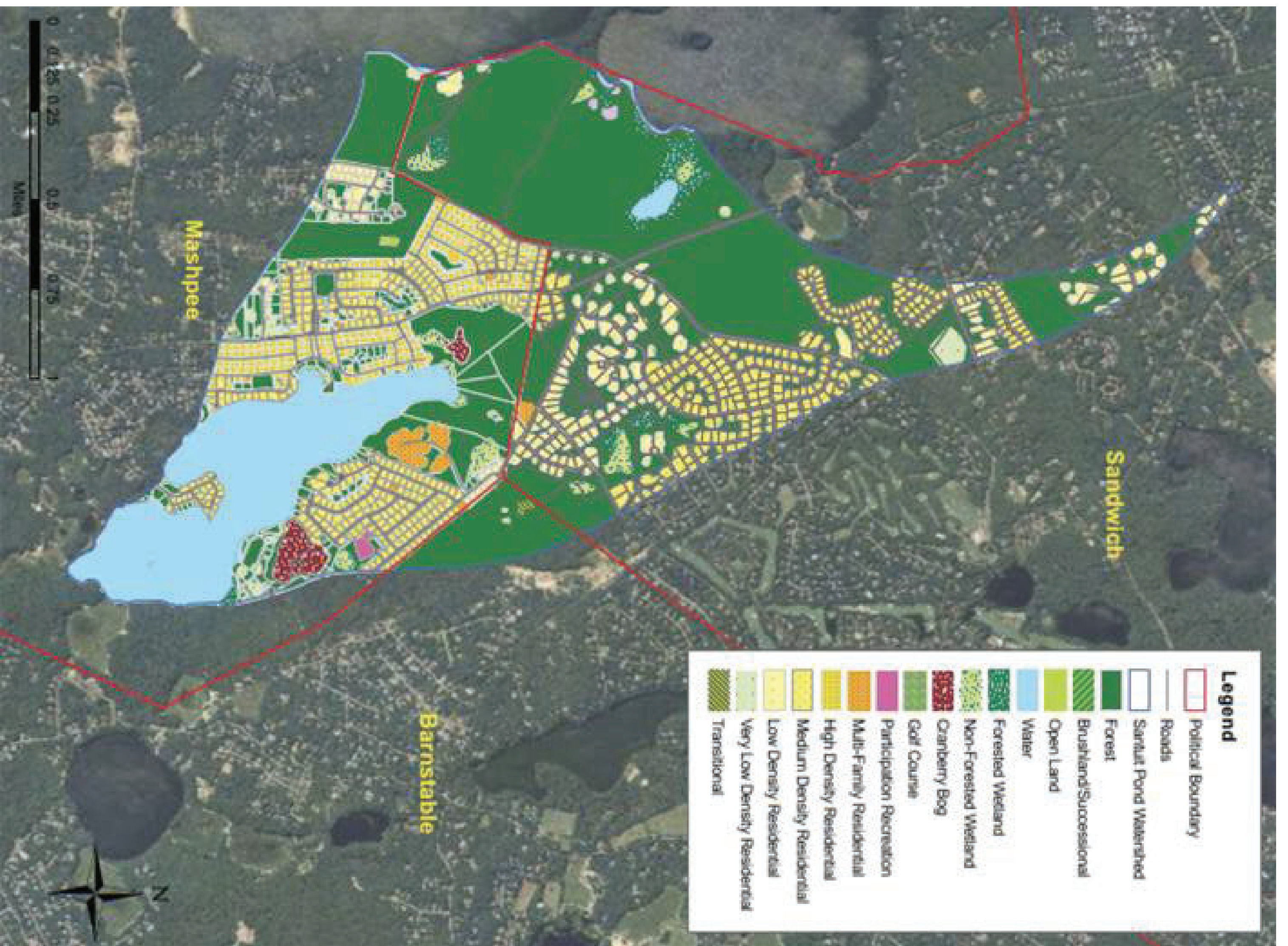
Restoration of a Mashpee Wampanoag Tribal Ancestral Pond

PROBLEM: Santuit Pond located in Mashpee, MA is suffering from **excessive phosphorus pollution from storm water runoff and hydrologic imbalance from surrounding development**. Excessive phosphorus has caused impairment to aquatic life and recreational uses. The pond is closed to swimming due to the incidence of and harmful algal blooms.



Cultural Significance

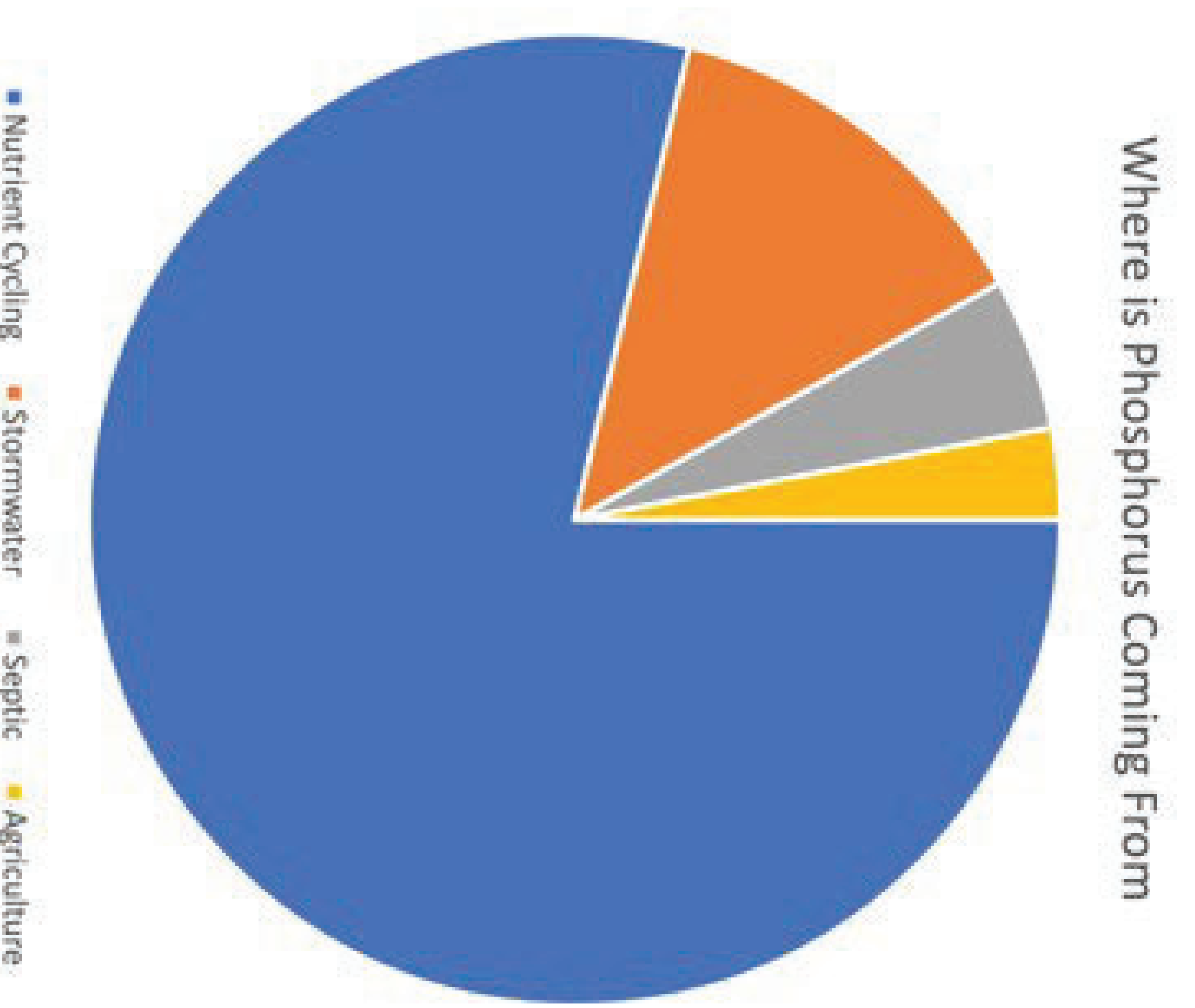
- The name “Santuit” originates from the Wampanoag word “Sachem” meaning spiritual leader.
- The Mashpee Wampanoag Tribe are known as the “People of The First Light”
- They have been stewards of land and water for 12,000 years
- Santuit Pond is sacred to the Tribe



Causes of Pollution in Santuit Pond Watershed

The pond has been studied for years and the causes of pollution are well known and documented. Aquatic life is impaired and algal blooms pose a public health threat.

- 78%: Nutrient Cycling
- External Load
- 13%: Stormwater
- 5%: Septic Systems
- 3%: Agriculture



Recommended Solutions

- Address Watershed Sources (Stormwater, Septic Agricultural)
- Nutrient Inactivation

