

How Meaningful Engagement and Community-Driven Solutions Can Improve Your Climate Adaptation and Resilience Projects



Meaningful engagement provides opportunities for the public to participate in decisions and share community concerns about activities that may affect their environment. Decision makers should seek out and facilitate the involvement of those potentially affected.

Climate change exacerbates existing pollution problems that impact the nation's land, air, water and people. Overburdened and underserved communities are already disproportionately affected by environmental pollution, and are particularly vulnerable to the impacts of climate change.

With well-designed, meaningful engagement and community-driven solutions, you can expect:

- **Increased likelihood of support** for the project within the community.
- **More durable and effective solutions.**
- **More creative and innovative solutions** informed by local knowledge and expertise.
- **Empowerment and inclusion** of people from different backgrounds.
- **Local networks of community members** that are committed to helping make the project come to fruition.
- **Increased trust** in community organizations and governance.
- **Opportunities** for discussing concerns.

6. MONITOR & EVALUATE

Evaluate the distribution of adaptation projects and their respective benefits to enhance equity and justice.



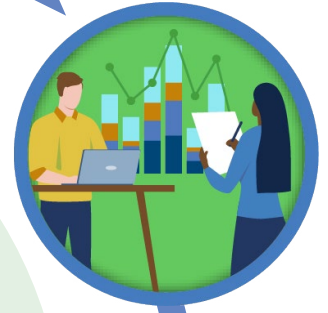
1. ENGAGE

Include diverse voices in the project development process, acknowledging the different ways communities experience climate change impacts and envision solutions.



2. ASSESS

Involve affected communities in the assessment process, ensuring their knowledge and perspectives are considered to shape your project. If the community is not on board with your project, start over.



You can integrate meaningful engagement activities and community-driven solutions into every stage of your climate adaptation and resilience project.



3. PLAN

Develop an outreach and engagement strategy and use a variety of techniques to create early, frequent and continuing opportunities for engagement.

4. APPLY FOR FUNDING

Involve a diverse set of partners in the community when drafting application materials.



5. IMPLEMENT

Create a work group or advisory board made up of community members that inform project implementation throughout its lifecycle.

